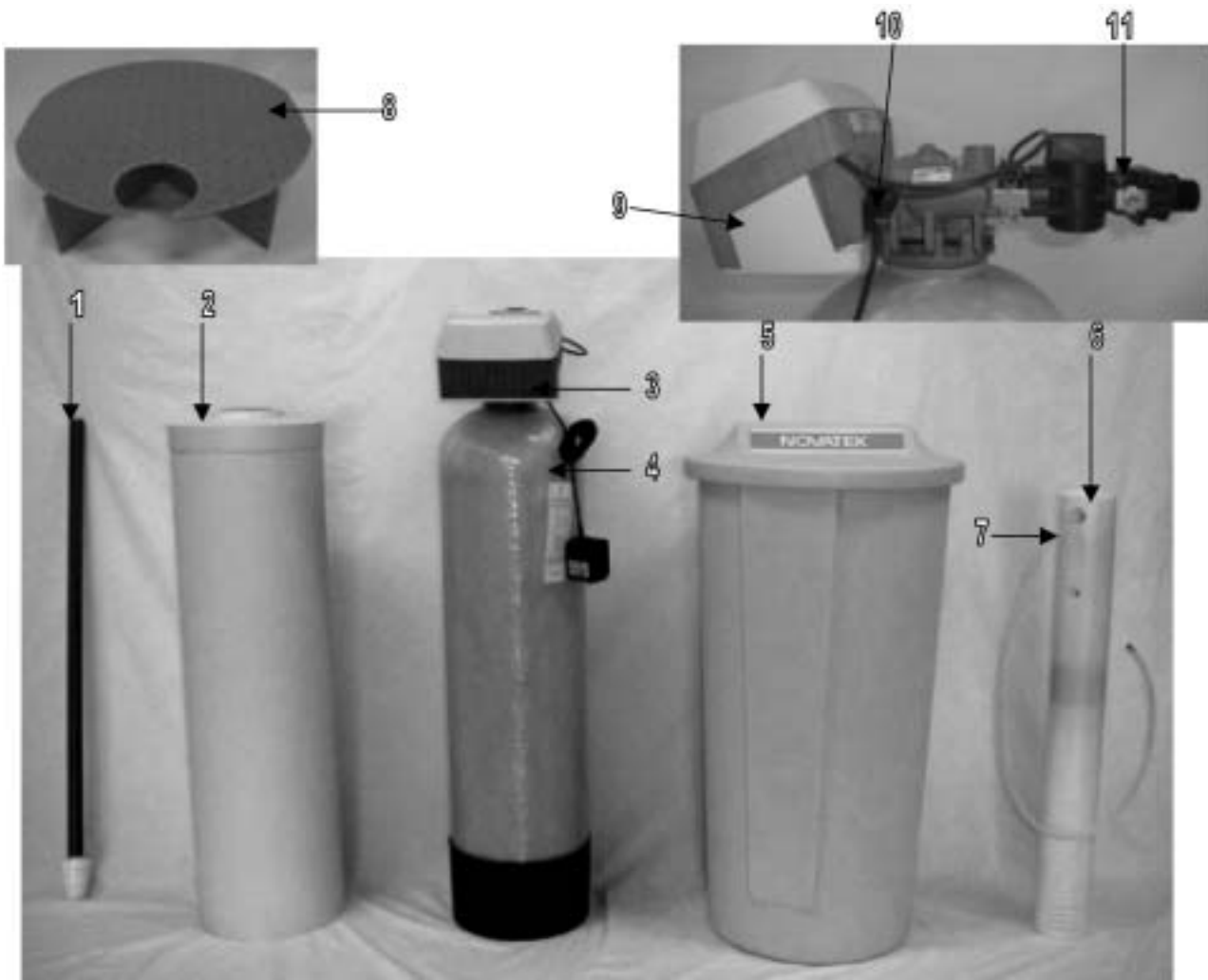


# Metermatic SE Twin Tank Water Softener



Part No.	Model Description	Distributor #1	Jacket #2	Valve #3	Tank #4	Brine Tank #5	Safety Float #7	Grid #8	Resin (21501)	Media (22001)
3910	NT24SE	19495	100503	7500-07	19354	100283	13624	NA	0.75 CF	0.065 CF
3911	NT32SE	19495	100506	7500-08	110354	100283	13624	NA	1.00 CF	0.080 CF
3912	NT40SE	19478	100507	7500-08	110474	100362	13624	19725	1.25 CF	0.080 CF
3913	NT64SE	19477	NA	7500-09	112524	100362	13624	19725	2.00 CF	0.120 CF
3914	NT96SE	60098	NA	7500-10	114651	100362	13624	19726	3.00 CF	0.150 CF

## Common Components

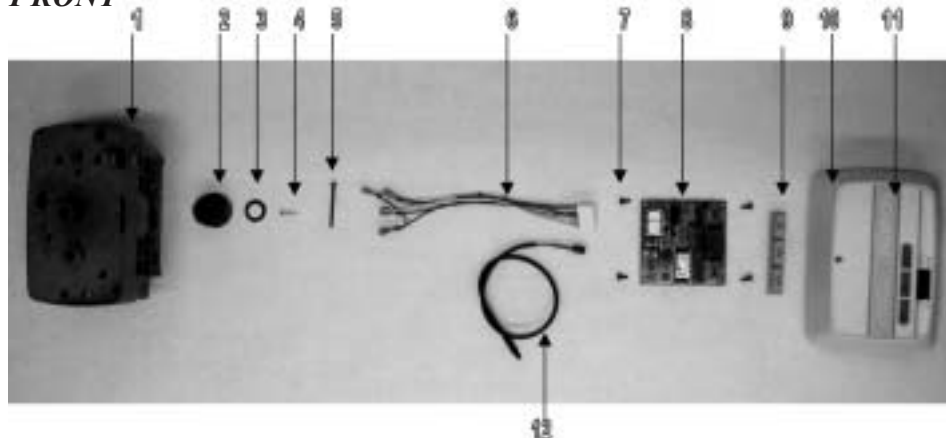
Item No.	Part No.	Description
6	48004	Brine Well Cap
9	19446	Back Cover
10	13308	Hose Barb
11	60049	Bypass

Unit 3914 includes a CPVC tank adapter - Part No. 81041  
 Distributor 60098 includes hub and laterals.

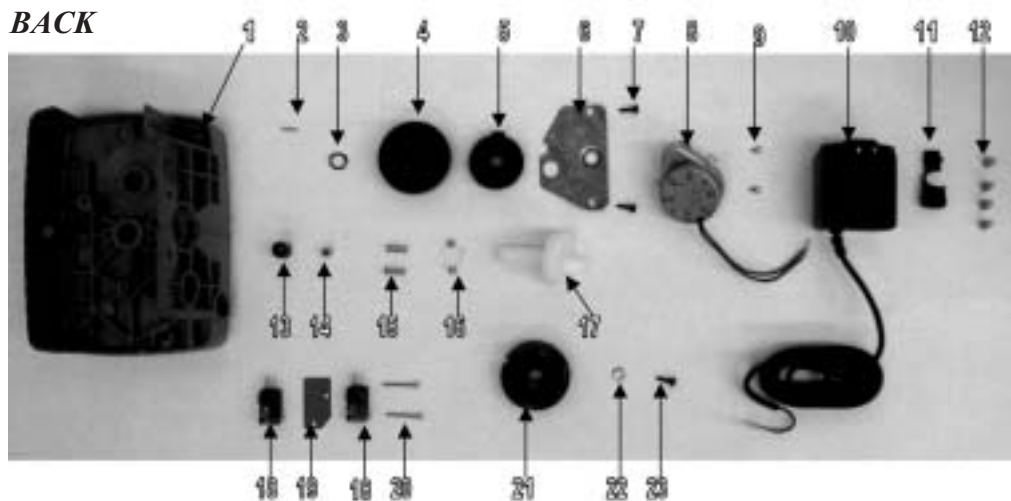
*Note: All USA units come standard with #60040SS - Stainless Steel Bypass.*

# Metermatic SE Twin Tank - 7500 Power Head

## FRONT



## BACK



### 7500 Power Head - FRONT

Item No.	Qty Req'd	Part No.	Description
1	1	17055-08	Drive Housing/Receptacle
2	1	40145	Blue Cycle Cam
3	1	19079	Friction Washer
4	1	15151	Screw
5	1	23402	Screw
6	1	19474	Wire Harness
7	4	17020	Screws
8	1	42099-1	Circuit Board
9	1	019473	Rubber Buttons
10	1	23381	Circuit Housing
11	1	51760	Circuit Label
12	1	19791-03	Meter Cable

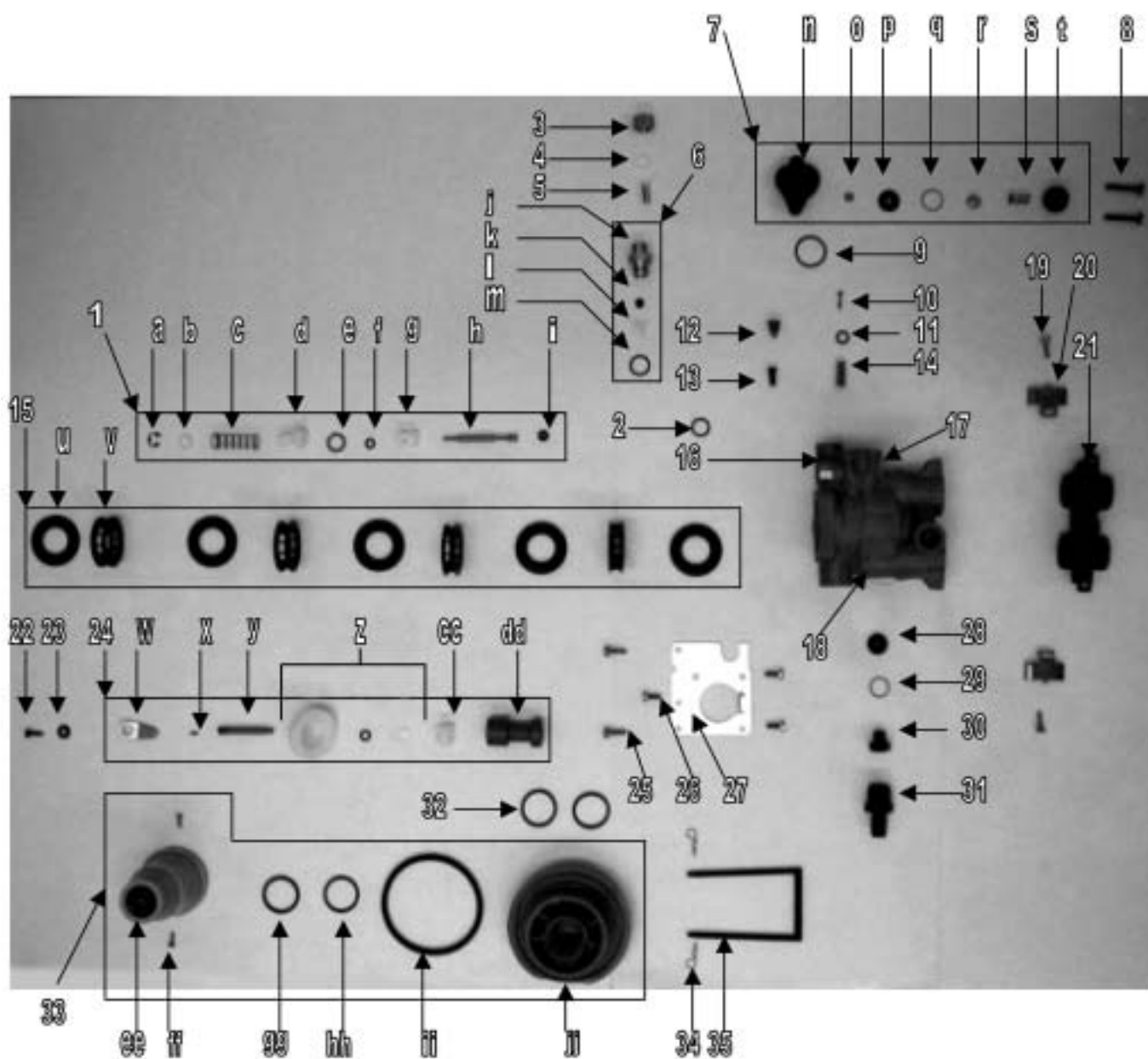
### 7500 Power Head - BACK

1	1	17055-02	Drive Housing /Receptacle
2	1	18655	Roll Pin
3	1	13299	Curved Washer
4	1	13017	Idle Gear
5	1	23045	Drive Gear

### 7500 Power Head - BACK (cont'd)

Item No.	Qty Req'd	Part No.	Description
6	1	13175	Motor Mounting Plate
7	2	13296	Mounting Screws
8	1	16944	Drive Motor, 24V
9	2	11384	Screws
10	1	19674	Transformer
11	1	13547	Strain Relief
12	4	12681	Tan Wire Nut
13	1	17213	Receptacle Retainer
14	1	17214	Receptacle
15	2	19080	Springs
16	2	13300	1/4" Ball
17	1	24958-20	Main Gear & Shaft
18	2	10218	Micro Switch (no lever)
19	1	10302	Insulator
20	2	17876	Screws
21	1	16667-03	Brine Valve Cam
22	1	12037	Plain Washer
23	1	13296	Screw

# Metermatic SE Twin Tank - 7500 Control Valve



# Metermatic SE Twin Tank - 7500 Control Valve

Item No.	Qty Req'd	Part No.	Description	Item No.	Qty Req'd	Part No.	Description
<b>1</b>	<b>1</b>	<b>19429</b>	<b>Brine Valve Assembly</b>	16	1	12128	BLFC Label, 0.25 GPM
a	1	11981-01	Retaining Ring		1	10759	0.5 GPM Label
b	1	16098	Brine Washer, Nylon	17	1	16928	Valve Body
c	1	11973	Brine Valve Spring	18	1	13333	Injector Label
d	1	13165	Brine Valve Cap	19	2	13314	Screws
e	1	13302	O-Ring	20	2	19569	Turbine Meter Clip
f	1	12550	Quad Ring	21	1	19797	Turbine Meter
g	1	13167	Brine Valve Spacer	22	1	13296	Screw
h	1	16670	Brine Valve Stem	23	1	13363	Plain Washer
i	1	12626	Brine Valve Seat	<b>24</b>	<b>1</b>	<b>40141-1</b>	<b>Piston Assembly</b>
2	1	13302	O-Ring	w	1	40140-01	Drive Link
3	1	10329	3/8" Brass Nut	x	1	13306	Roll Pin
4	1	10330	Delrin Sleeve	y	1	14469	Piston Rod
5	1	10332	Brass Insert	z	1	13446	End Plug Assembly
<b>6</b>	<b>1</b>	<b>19402</b>	<b>Control .25 Refill</b>	cc	1	14309	Piston Rod Retainer
j	1	13244	BLFC Adapter	dd	1	40141	Piston
k	1	12094	0.25 GPM Flow Washer	25	2	12473	Screws
	1	12095	0.50 GPM Flow Washer	26	3	12112	Screws
l	1	13245	BLFC Button Retainer	27	1	16561	End Plug Retainer
m	1	12977	O-Ring	28	1	12086	1.50 GPM Flow Washer
<b>7</b>	<b>1</b>	<b>19475</b>	<b>Regulator Cap Assembly</b>		1	12087	2.00 GPM Flow Washer
n	1	15449	Regulator Body		1	12089	3.00 GPM Flow Washer
o	1	14846	Pressure Reg Washer		1	12091	4.00 GPM Flow Washer
p	1	14847	Regulator Diaphragm	29	1	15348	O-Ring
q	1	14848	Slip Ring	30	1	13173	DLFC Button Retainer
r	1	23391	Seat	31	1	13308	Hose Barb
s	1	14850	Regulator Spring	32	2	13304	O-Ring
t	1	14851	Regulator Cap	<b>33</b>	<b>1</b>	<b>19443</b>	<b>Tank Adapter "Softener"</b>
8	2	13315	Screws	ee	1	13700	Cone
9	1	13303	O-Ring	ff	2	13748	Screws
10	1	23393	Regulator Poppet	gg	1	13030	Distributor Tube Retainer
11	1	13301	O-Ring	hh	1	13304	O-Ring
12	1	10913-00	Violet Injector Nozzle	ii	1	12281	O-Ring
	1	10913-1	White Injector Nozzle	jj	1	16926-01	Adapter Base
	1	10913-0	Reg Injector Nozzle	34	2	14915	Cotter Pin
	1	10913-2	Blue Injector Nozzle	35	1	16560	Retaining Pin
13	1	10914-00	Violet Injector Throat				
	1	10914-0	Red Injector Throat				
	1	10914-2	Blue Injector Throat				
14	1	15548	Pressure Reg Screen				
<b>15</b>	<b>1</b>	<b>13976</b>	<b>Seal &amp; Spacer Assembly</b>				
u	5	13242	Main Seals				
v	4	14241	Spacers				