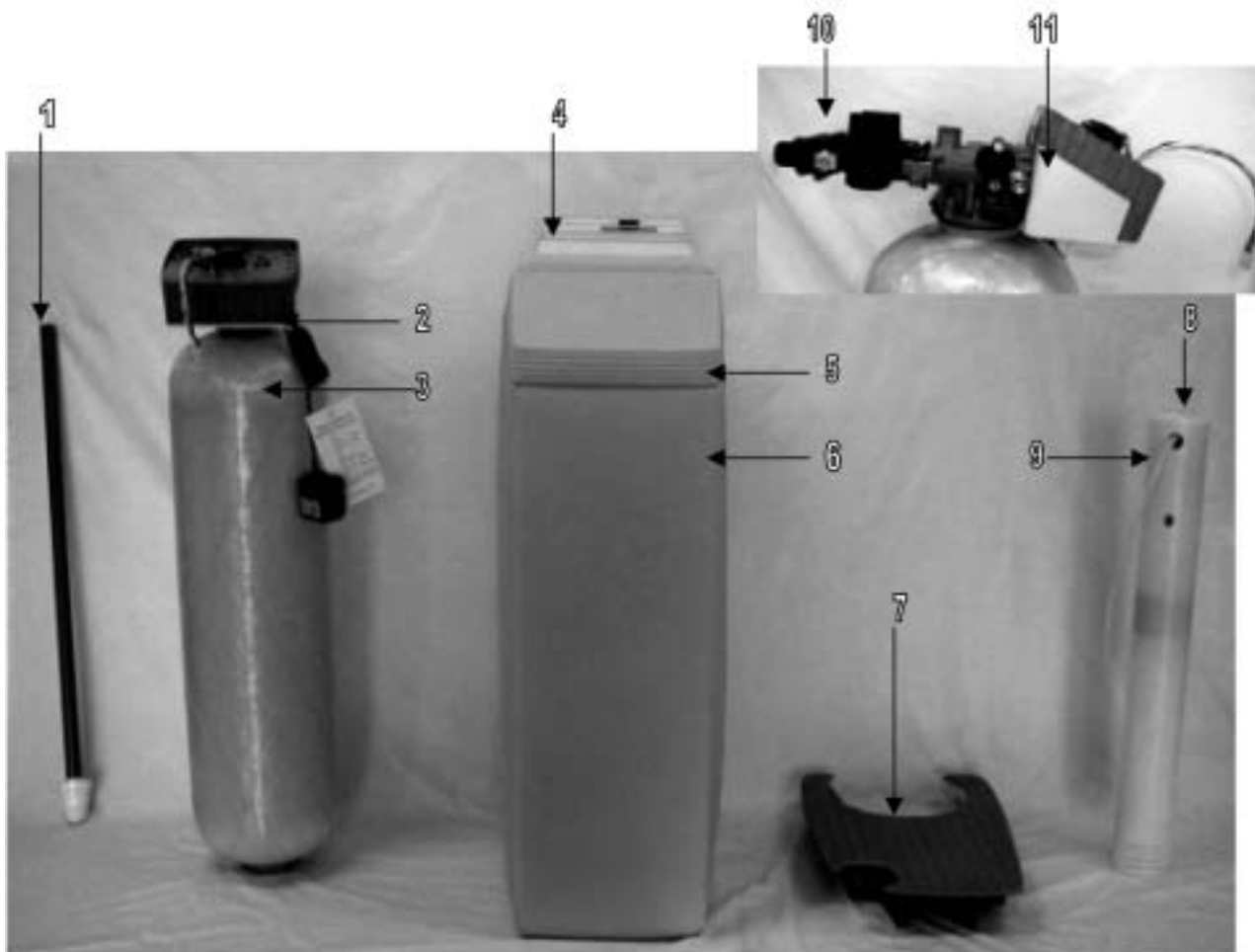


Metermatic SE Cabinet Water Softener



<u>Part No.</u>	<u>Model Description</u>	<u>Valve #2</u>	<u>Tank #3</u>	<u>Grid #7</u>	<u>Resin (21501)</u>	<u>Gravel (22001)</u>
3915	NC24SE	7500-05	19354	19715	0.75 CF	0.065 CF
3916	NC32SE	7500-06	110354	19716	1.00 CF	0.080 CF

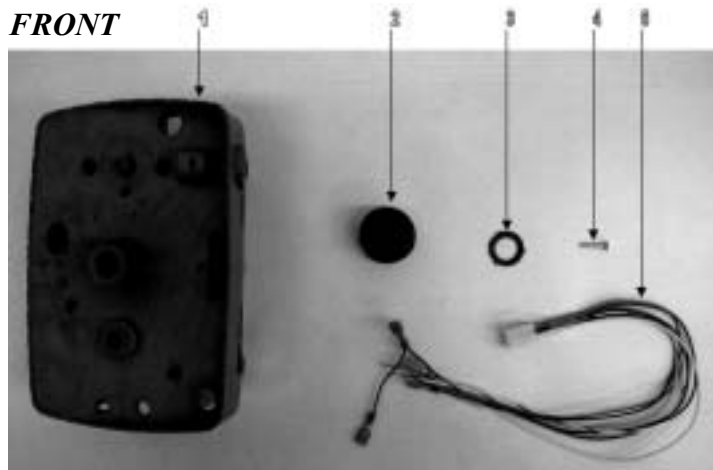
Common Components

<u>Item No.</u>	<u>Part No.</u>	<u>Description</u>
1	19495	Distributor
4	19381	Hood
5	100293	Lid
6	100294	Cabinet
8	48004	Brine Well Cap
9	13624	Safety Float
10	60049	Bypass
11	19446	Back Cover
NS	12338	Hose Barb

Note: All USA units come standard with #60040SS - Stainless Steel Bypass.

Metermatic SE Cabinet - 7500 Power Head

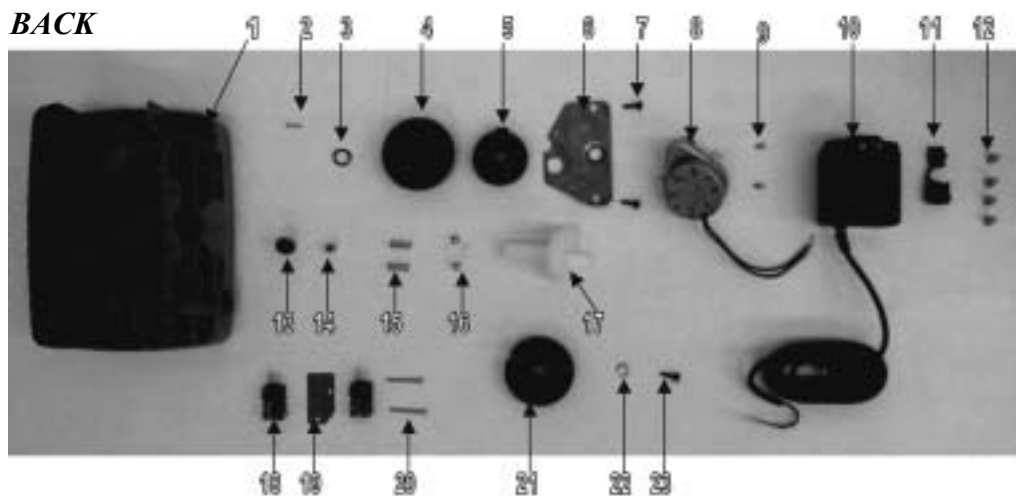
FRONT



7500 Power Head - FRONT

Item No.	Qty Req'd	Part No.	Description
1	1	17055-08	Drive Housing/Receptacle
2	1	40145	Blue Cycle Cam
3	1	19079	Friction Washer
4	1	15151	Screw
5	1	19474-021	Wire Harness

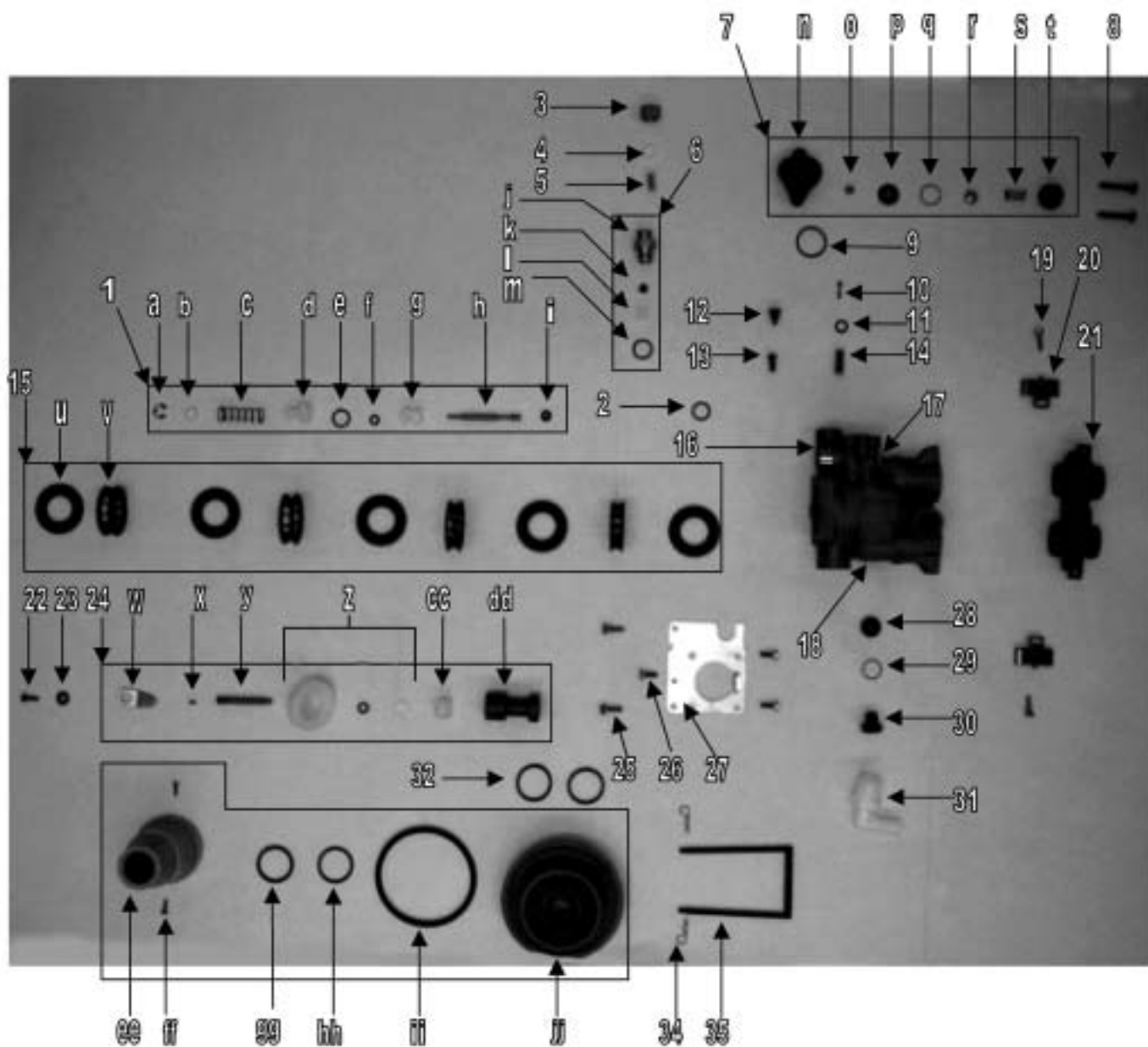
BACK



7500 Power Head - BACK

Item No.	Qty Req'd	Part No.	Description	Item No.	Qty Req'd	Part No.	Description
1	1	17055-08	Drive Housing/Receptacle	13	1	17213	Receptacle Retainer
2	1	18655	Roll Pin	14	1	17214	Receptacle
3	1	13299	Curved Washer	15	2	19080	Springs
4	1	13017	Idler Gear	16	2	13300	1/4" Ball
5	1	23045	Drive Gear	17	1	24958-20	Main Gear & Shaft
6	1	13175	Motor Mounting Plate	18	1	10218	Micro Switch (no lever)
7	2	13296	Mounting Screws	19	1	10302	Insulator
8	1	16944	Drive Motor, 24 V	20	2	17876	Screws
9	2	11384	Screws	21	1	1667-03	Brine Valve Cam
10	1	19674	Transformer	22	1	12037	Plain Washer
11	1	13547	Strain Relief	23	1	13296	Screw
12	4	12681	Tan Wire Nut				

Metermatic SE Cabinet - 7500 Control Valve



Metermatic SE Cabinet - 7500 Control Valve

Item No.	Qty Req'd	Part No.	Description	Item No.	Qty Req'd	Part No.	Description
1	1	19429	Brine Valve Assembly	16	1	12128	BLFC Label, 0.25 GPM
a	1	11981-01	Retaining Ring	17	1	16928	Valve Body
b	1	16098	Brine Washer, Nylon	18	1	13333	Injector Label
c	1	11973	Brine Valve Spring	19	2	13314	Screws
d	1	13165	Brine Valve Cap	20	2	19568	Turbine Meter Clip
e	1	13302	O-Ring	21	1	19797	Turbine Meter
f	1	12550	Quad Ring	22	1	13296	Screw
g	1	13167	Brine Valve Spacer	23	1	13363	Plain Washer
h	1	16670	Brine Valve Stem	24	1	40141-1	Piston Assembly
i	1	12626	Brine Valve Seat	w	1	40140-01	Drive Link
2	1	13302	O-Ring	x	1	13306	Roll Pin
3	1	10329	3/8" Brass Nut	y	1	14469	Piston Rod
4	1	10330	Delrin Sleeve	z	1	13446	End Plug Assembly
5	1	10332	Brass Insert	cc	1	14309	Piston Rod Retainer
6	1	19402	Control .25 Refill	dd	1	40141	Piston
j	1	13244	BLFC Adapter	25	2	12473	Screws
k	1	12094	0.25 GPM Flow Washer	26	3	12112	Screws
l	1	13245	BLFC Button Retainer	27	1	16561	End Plug Retainer
m	1	12977	O-Ring	28	1	12086	1.50 GPM Flow Washer
7	1	19475	Regulator Cap Assembly		1	12087	2.00 GPM Flow Washer
n	1	15449	Regulator Body	29	1	15348	O-Ring
o	1	14846	Pressure Reg Washer	30	1	13173	DLFC Button Retainer
p	1	14847	Regulator Diaphragm	31	1	12338	Hose Barb
q	1	14848	Slip Ring	32	2	13304	O-Ring
r	1	23391	Seat	33	1	19443	Tank Adapter "Softener"
s	1	14850	Regulator Spring	ee	1	13700	Cone
t	1	14851	Regulator Cap	ff	2	13748	Screws
8	2	13315	Screws	gg	1	13030	Distributor Tube Retainer
9	1	13303	O-Ring	hh	1	13304	O-Ring
10	1	23393	Regulator Poppet	ii	1	12281	O-Ring
11	1	13301	O-Ring	jj	1	16926-01	Adapter Base
12	1	10913-00	Violet Injector Nozzle	34	2	14915	Cotter Pin
	1	10913-1	White Injector Nozzle	35	1	16560	Retaining Pin
13	1	10914-00	Violet Injector Throat				
14	1	15548	Pressure Reg Screen				
15	1	13976	Seal & Spacer Assembly				
u	5	13242	Main Seals				
v	4	14241	Spacers				