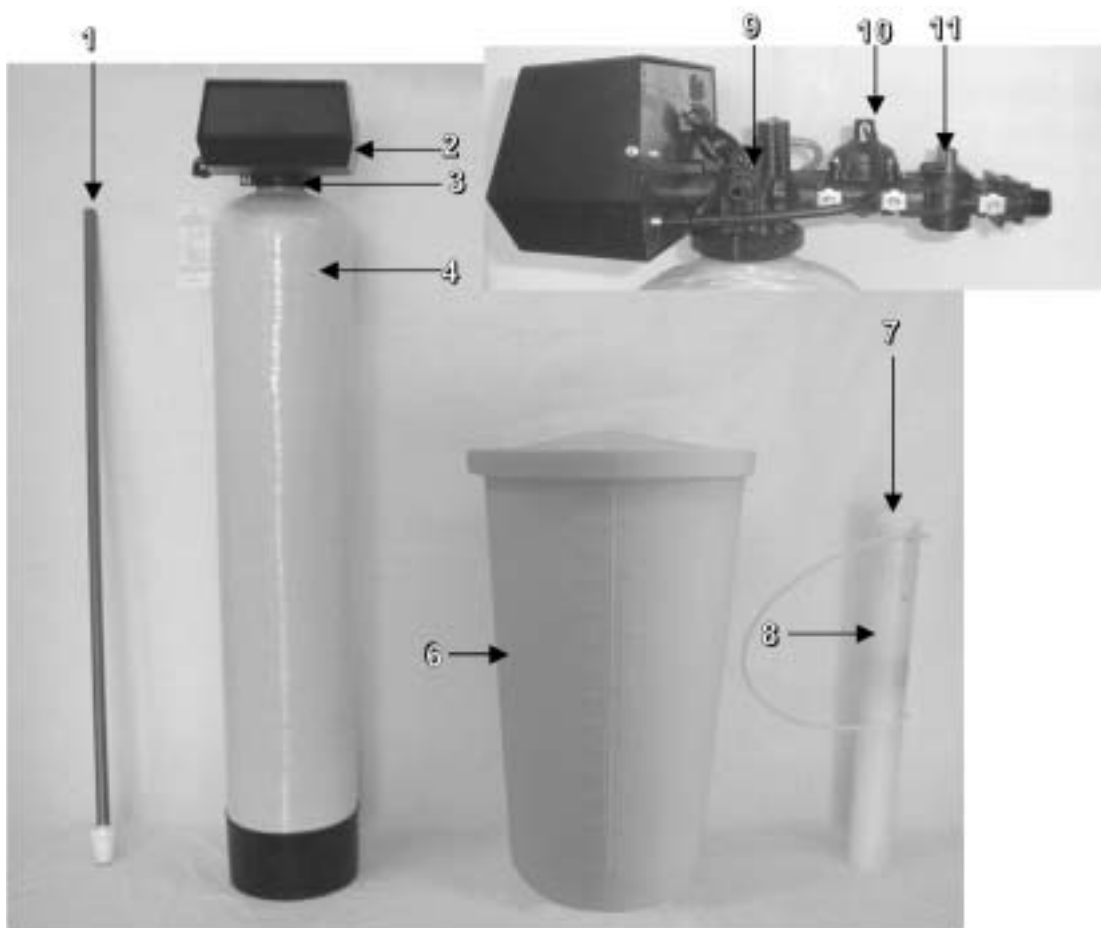


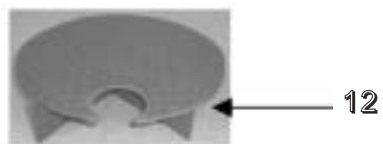
Iron Guard and Iron Guard Plus



Part No. <u>CDN</u>	Part No. <u>USA</u>	Model <u>Description</u>	Distributor <u>(1)</u>	Valve <u>(3)</u>	Tank <u>(4)</u>	Lid <u>(5)</u>	Brine Tank <u>(6)</u>	Grid <u>(12)</u>	Media <u>Bed</u>
2060	2060-4	FE30MI	19807	2510-92	110474	NA	100192	19709	95405
2059	2059-4	FE45MI	19806	2510-100	112524	NA	100192	95009-21	95407
2058	2058-4	FE60MI	19806	2510-99	114506	NA	100192	19706	Call
2061	2061-4	STFE30MI	19806	2510-92	110544	NA	100192	19709	Call

Common Components

<u>Item No.</u>	<u>Part No.</u>	<u>Description</u>
2	19291 - 020	Cover
7	48004	Brine Well Cap
9	13308	Hose, Barb
10	60088 - 180	Meter, 180 Degree
11	60049	Bypass
8	13624	Safety Float

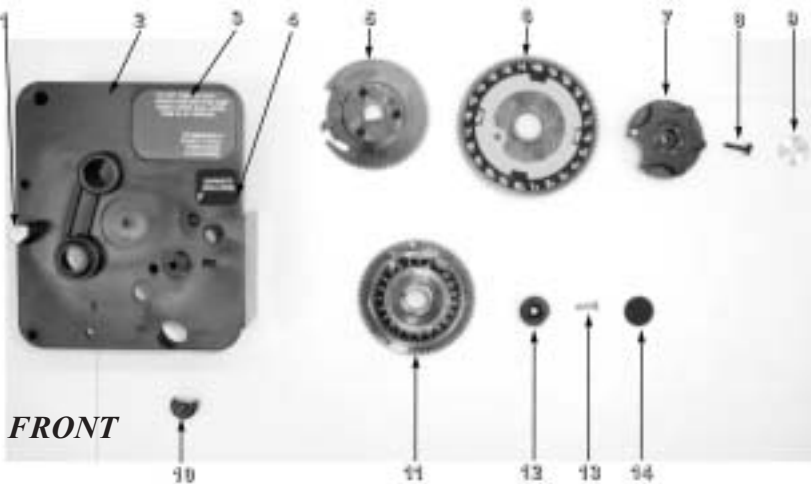


Units 2058 include a CPVC tank adapter – Part No. 81041

Note: All USA units come standard with #60040SS - Stainless Steel Bypass.

2510 Meter Initiated Valve - 3210 Timer Assembly

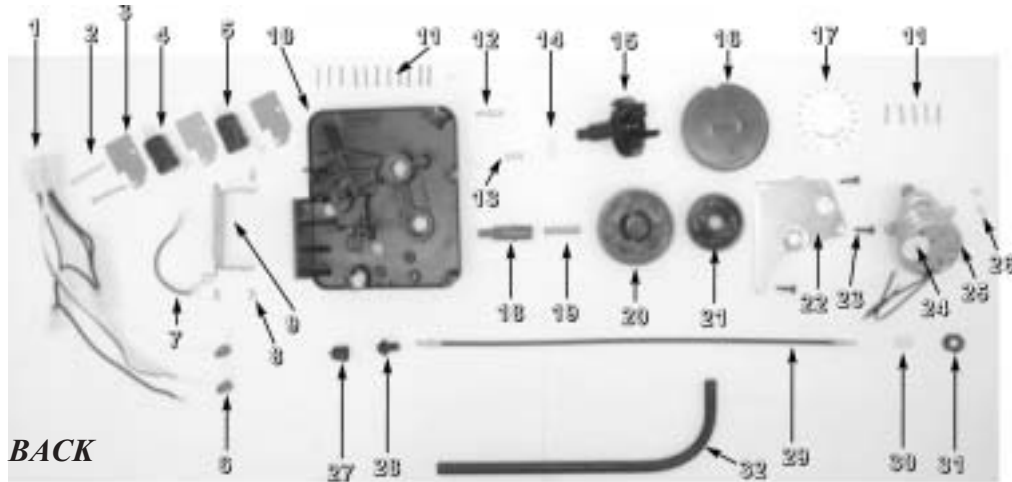
3210 MI Timer Assembly - FRONT



FRONT

Item No.	Qty	Part No.	Description
4	1	14198	Indicator Label
5	1	13802	Cycle Actuator Gear
6	1	13973	24 Hour Gear Assembly
	1	13009	24 Hour Gear
	1	13956	24 Hour Label
7	1	13886	Timer Knob
8	1	13296	Mounting Screw
9	1	11999	Button Timer Label
10	1	14252	Outboard Bearing Cap
11	1	14039	Program Wheel Assembly
	1	13803	Program Drive Wheel Gear
	1	13885	Program Wheel Cover
	1	15956	Program Wheel Adj Disc
	1	15967	Gallons Label
	2	13898	Screws
12	1	13806	Program Wheel Retainer
13	1	13748	Screw
14	1	13953	Program Wheel Label

Item No.	Qty	Part No.	Description
1	1	14007	Time Of Day Label
2	1	13870	Timer Housing
3	1	14045	Instruction Timer Label

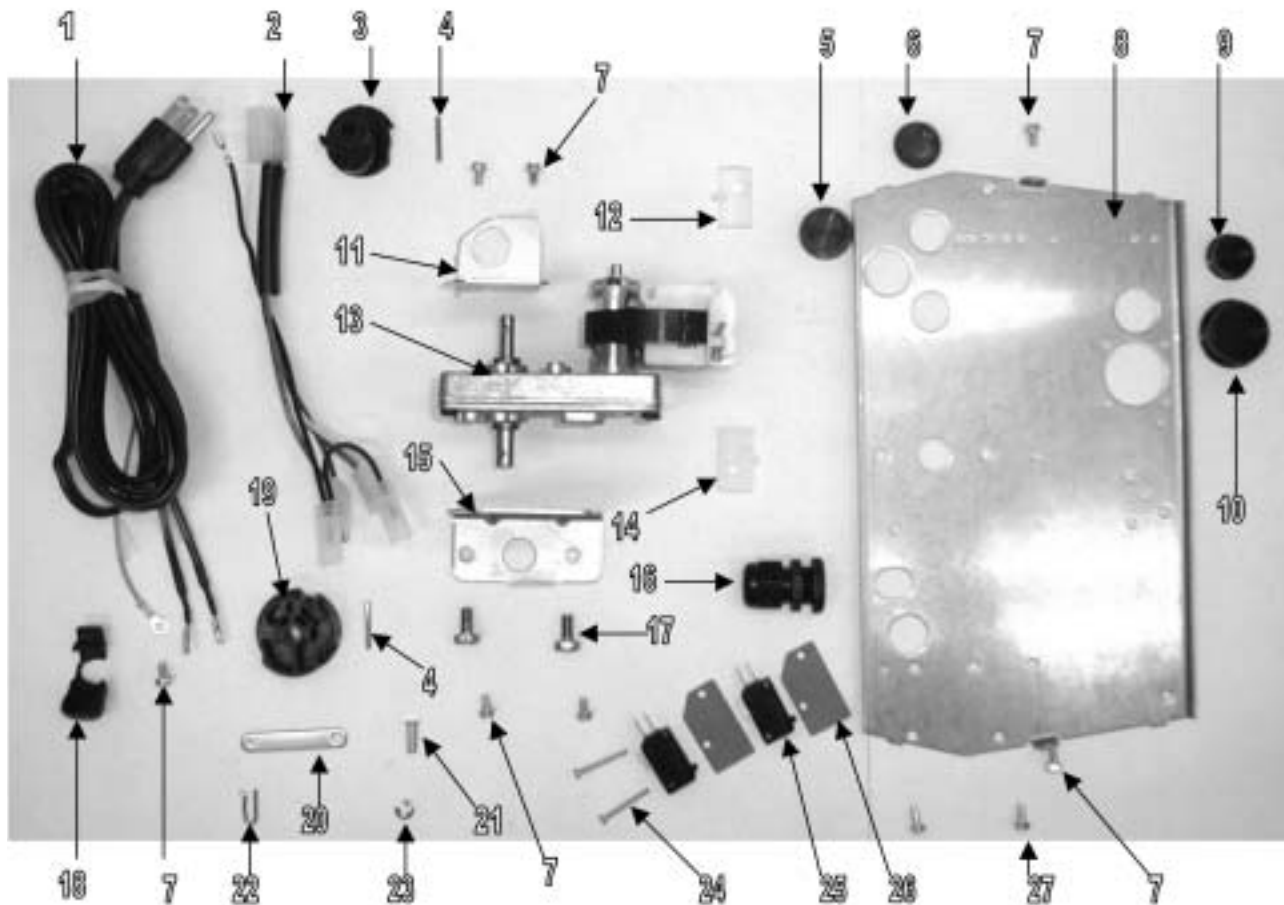


BACK

3210MI Timer Assembly - BACK

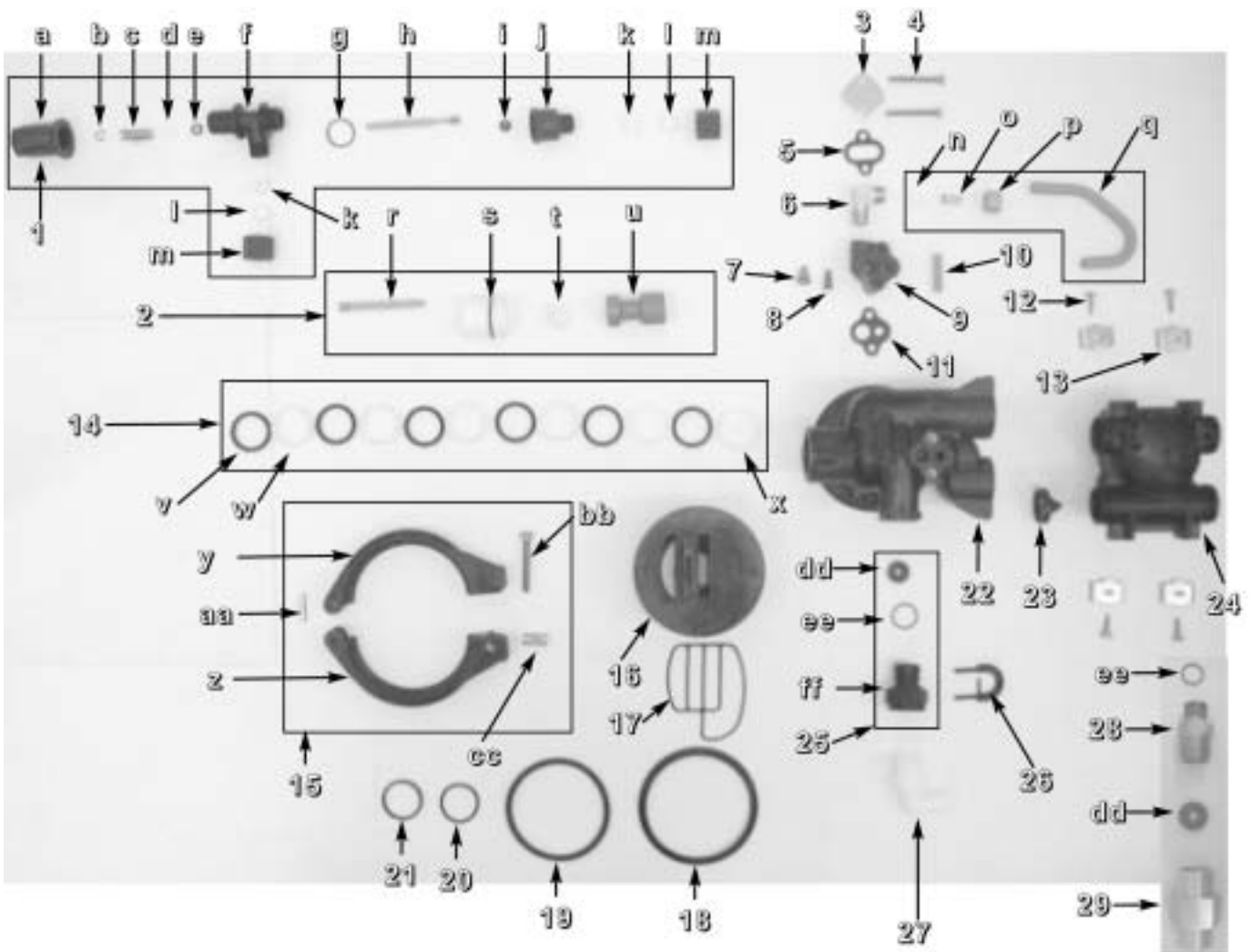
Item No.	Qty	Part No.	Description	Item No.	Qty	Part No.	Description
1	1	13902	Wire Harness	17	1	13901	Program Wheel Label
2	2	11413	Screw	18	1	13018	Idler Pinion
3	3	14087	Insulator	19	1	13312	Idler Shaft Spring
4	1	15320	Micro Switch (White Lever)	20	1	13017	Idler Gear
5	1	10896	Micro Switch (1/2 Moon Lever)	21	1	13164	Drive Gear
6	2	18612	Blue Wire Nut	22	1	13887	Motor Mounting Plate
7	1	15354-01	Green Ground Wire	23	3	13296	Screws
8	3	11384	Screw	24	1	18743	Drive Motor, 120 V
9	1	13881	Hinge Bracket	25	1	14102	Motor Label
10	1	13870	Timer Housing	26	2	13278	Screws
11	16	15493	Spring Pin	27	1	13830	Program Wheel Drive Pinion
12	1	14265	Spring Clip	28	1	13831	Drive Pinion Clutch
13	1	14457	Spring	29	1	14730	Meter Cable
14	1	15066	1/4" Delrin Ball	30	1	14276	Meter Clutch Spring
15	1	13911	Main Drive Gear	31	1	14253	Clutch Spring Retainer
16	1	13880	Program Wheel	32	1	15307	Meter Cable Guide

2510 Meter Initiated Valve - Power Head Assembly



Item #	Qty.	Part #	Description	Item #	Qty.	Part #	Description
1	1	11838	Power Cord	15	1	10774	Drive Side Bracket
2	1	11667	Wire Harness	16	2	17967	Liquid Tight Fitting
3	1	12777	Brine Valve Cam	17	1	10231	Screws
4	2	10338	Roll Pin	18	1	13547	Strain Relief
5	1	16493	Plug	19	1	12576	Drive Cam
6	2	13741	Plug	20	1	10621	Link
7	7	10872	Screws	21	1	13366	Drive Bearing
8	1	40264	Back Plate	22	1	10909	Connecting Rod Pin
9	1	15806	Plug	23	1	10250	Retaining Ring
10	1	17421	Plug	24	2	14923	Screws
11	1	11826	Motor Bracket	25	2	10218	Micro Switch (No Lever)
12	1	28414 - 2	K	26	2	10302	Insulator
13	1	10769	Drive Motor, 110 V	27	2	10300	Screws
14	1	28414 - 1	M				

2510 Meter Initiated Control Valve Assembly



2510 Meter Initiated Control Valve Assembly

Item No.	Qty Req'd	Part No.	Description	Item No.	Qty Req'd	Part No.	Description
1	1	60029	Brine Valve, 1600 , Brass, No Refill	14	1	13812	Seal & Spacer Kit
		60011-50	Brine Valve, 1650, Noryl, 0.5 gpm Refill	v	6	10545	Piston Seal
		60011-00	Brine Valve, 1650 Noryl, No Refill	w	5	11451	Spacers
a	1	17906	Stem Guide	x	1	10757	End Spacer
b	1	10250	Retaining Ring	15	1	P60503	2510 Clamp Ring Assy
c	1	10249	Brine Valve Spring	y	1	19900	Male Clamp
d	1	17908	Stem Sleeve	z	1	19899	Female Clamp
e	1	12550	Quad Ring	aa	1	040000	Hinge Pin
f	1	17905	Brine Valve Body	bb	1	40057	Clamp Screw
g	1	16924	O - Ring	cc	1	19998	Clamp Pivot
h	1	12552	Brine Valve Stem	16	1	19322	Adapter Base
i	1	12626	Brine Valve Seat	17	1	19936	Base Adapter Seal
j	1	17907	Flow Control Fitting	18	1	19197	Slip Ring
k	2	19624	GFN Nut Sleeve	19	1	18303	O - Ring
l	2	19623	GFN Nut Gripper	20	1	13304	O - Ring
m	2	19321	Nut	21	1	13030	Dist. Tube Retainer
n	1	10330	3/8" Delrin Sleeve	22	1	19328	2510 Valve Body
o	1	10332	3/8" Insert	23	1	No Part #	Flow Straightener
p	1	10329	3/8" Fitting Nut	24	1	60088-180	180 Degree Meter
q	1	40027	Brine Valve Tube	25	1	13615	Cont. Backwash 3.5 Assy
2	1	13811	Piston Assembly		1	13616A	Cont. Backwash 5.0 Assy
r	1	14452	Piston Rod		1	13617	Cont. Backwash 7.0 Assy
s	1	10598	End Plug Assembly		1	60760-101	Control DLF 10 GPM
t	1	14309	Piston Rod Retainer				(Shown Separately)
u	1	15168	Piston	dd	1	12090	3.50 GPM Washer
3	1	11893	Flat Injector Cap		1	12092	5.00 GPM Washer
4	2	10692	Screws		1	12408	7.00 GPM Washer
5	1	10229	Injector Cover Gasket		1	16529	10.00 GPM Washer
6	1	10328	90 Degree Tube Fitting	ee	1	11183	O - Ring
7	1	12973 - 2	PVC Nozzle	ff	1	11385 - 01	Flow Control Housing
8	1	12974 - 2	PVC Throat	26	1	18312	Retainer Clip
9	1	17776	Injector Body	27	1	12338	90 Degree Hose Barb
10	1	10227	Injector Screen	28	1	11912	Drain Line Fitting
11	1	11475	Body Gasket	29	1	019480	Drain Line Housing
12	4	13314	Screws				
13	4	13255	Mounting Clip				