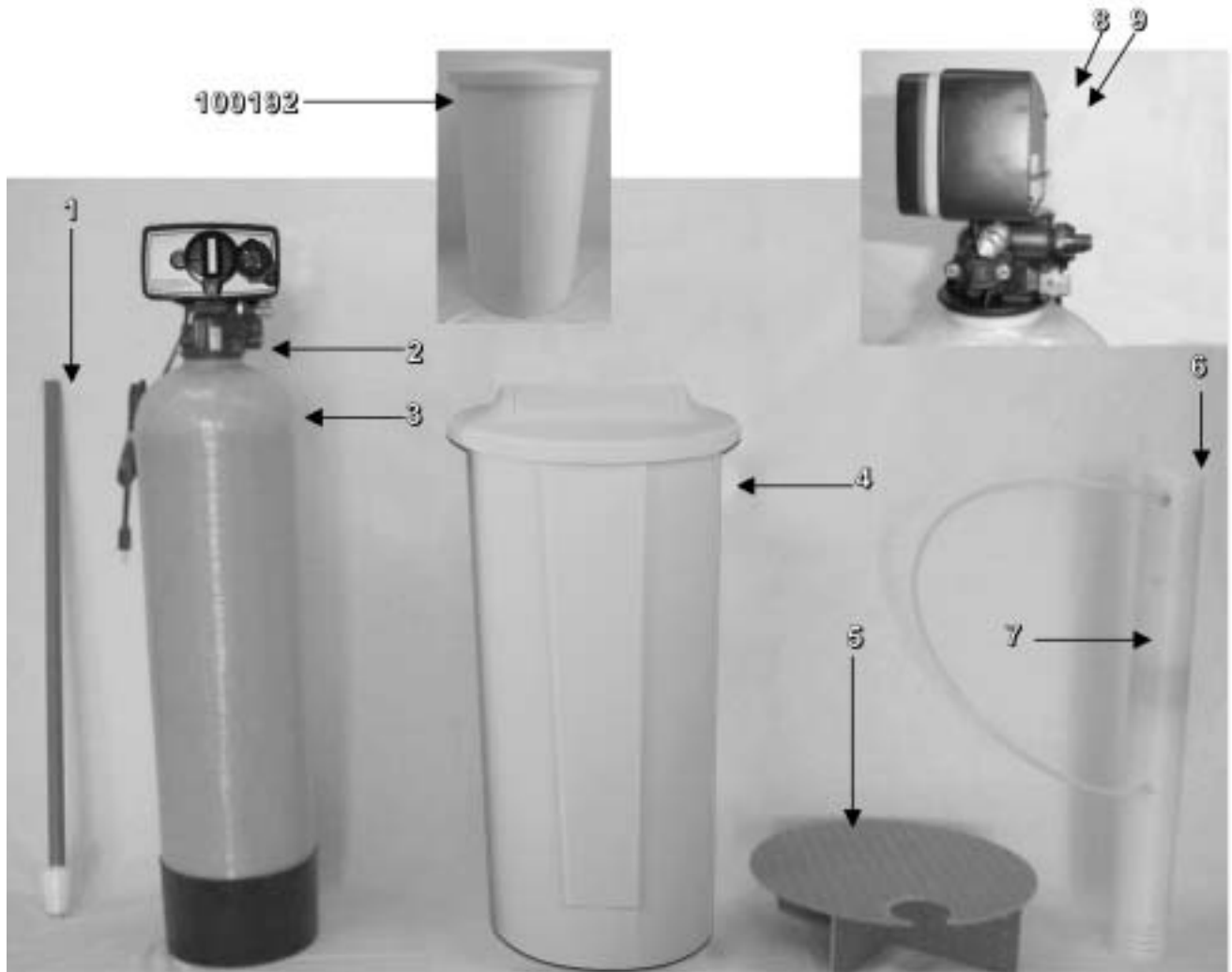


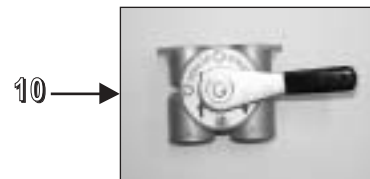
# Econoflo CC Twin Tank Water Softener (Available in US only)



<u>Part No.</u>	<u>Model Description</u>	<u>Distributor (1)</u>	<u>Valve (2)</u>	<u>Tank (3)</u>	<u>Brine Tank (4)</u>	<u>Grid (5)</u>	<u>Safety Float (7)</u>	<u>Resin #21501</u>
5351	EFT20CC	19495	Call	19354	100283	NA	13623	0.75 CF
5352	EFT30CC	19495	Call	110354	100283	NA	13623	1.00 CF
5354	EFT40CC	19478	Call	110474	100283	NA	13623	1.25 CF
5355	EFT60CC	19477	Call	112524	100192	19710	13623	2.00 CF
5356	EFT90CC	60098	Call	114651	100192	95009-21	13626	3.00 CF

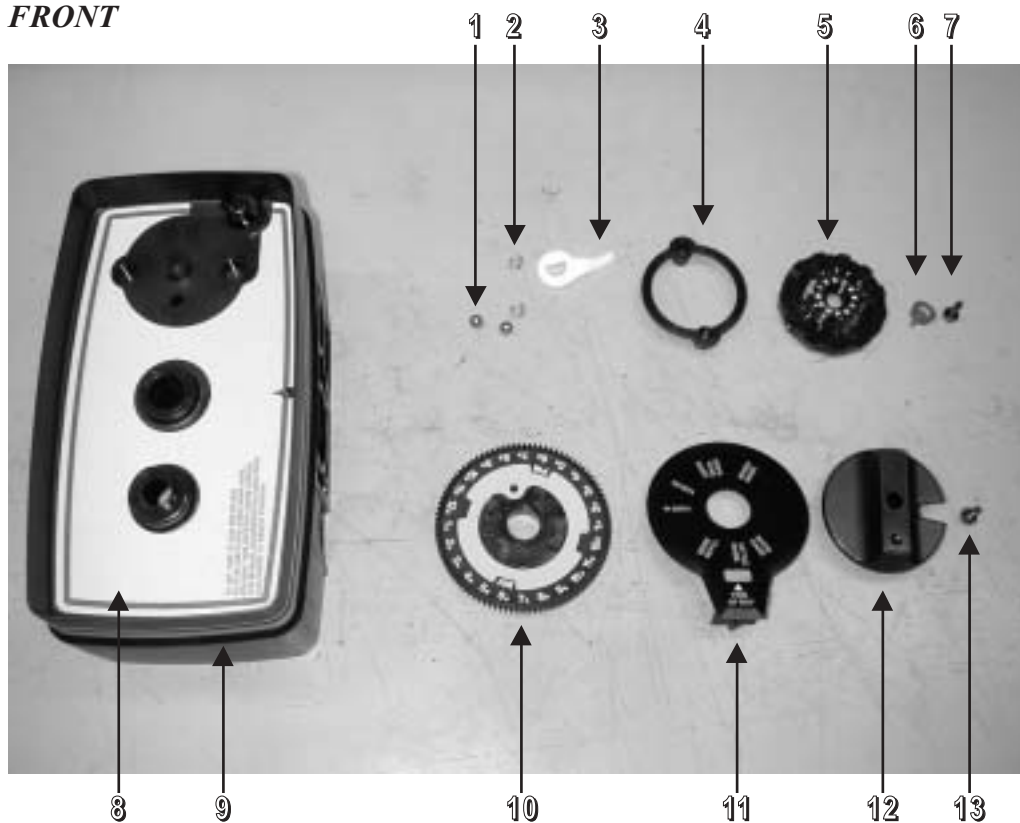
## Common Components

<u>Item No.</u>	<u>Part No.</u>	<u>Description</u>
6	48004	Brine Well Cap
8	13229	Back Cover
9	13296	Screw
10	60040SS	Bypass



# Econoflo CC Cabinet/Twin Tank - 5600 Power Head

## FRONT

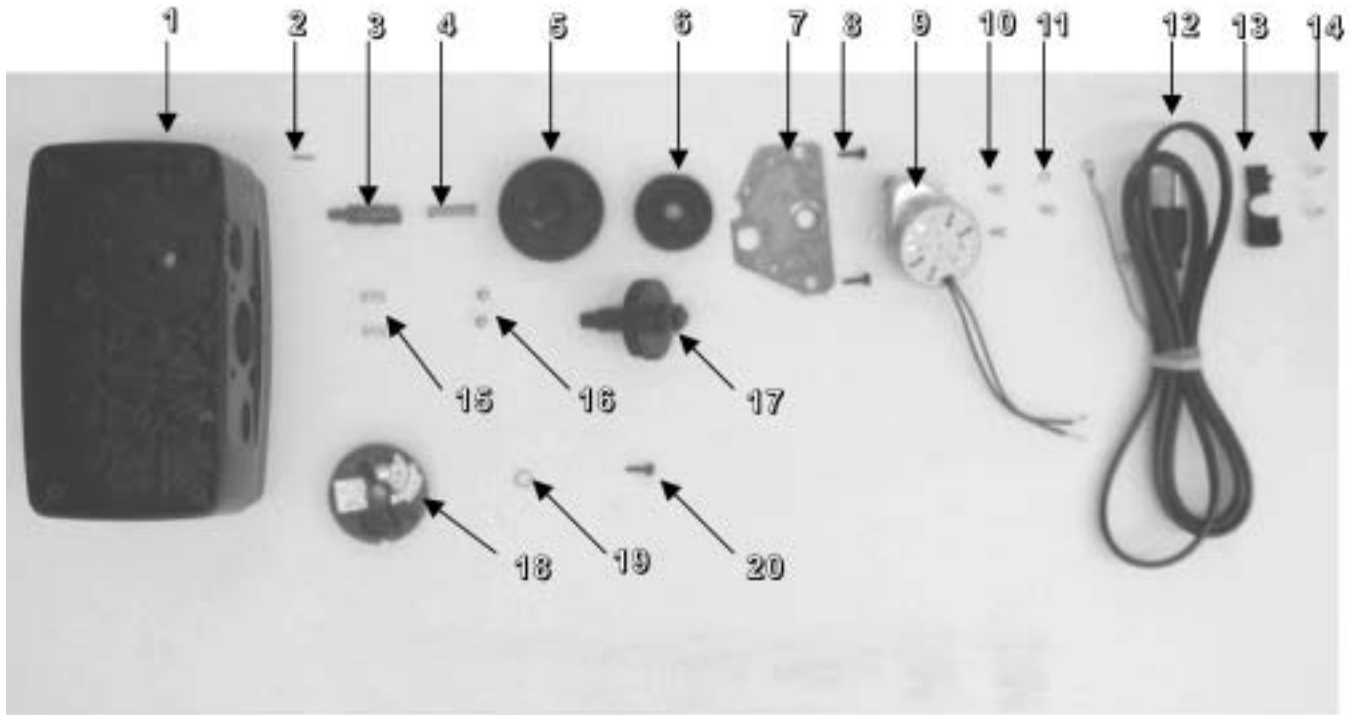


## 5600 Power Head Front

Item No.	Qty Req'd	Part No.	Description
1	2	13300	1/4" Ball
2	2	13311	Skipper Wheel Spring
3	1	13011	Cycle Arm
4	1	13864	Skipper Wheel Ring
5	1	14381	Skipper Wheel
6	1	13014	Red Pointer
7	1	13296	Mounting Screw
8	1	13309	Face Label, Brown
9	1	14448-000	Drive Housing, 5600 CC
10	1	13973	24 Hour Gear Assembly
	1	13009	24 Hour Gear
	1	13956	Label
11	1	14176	Dial
12	1	14177	5600 Black Knob
13	1	15151	Screw
14	1	14175	Beige Label (not shown)

# Econoflo CC Cabinet/Twin Tank - 5600 Power Head

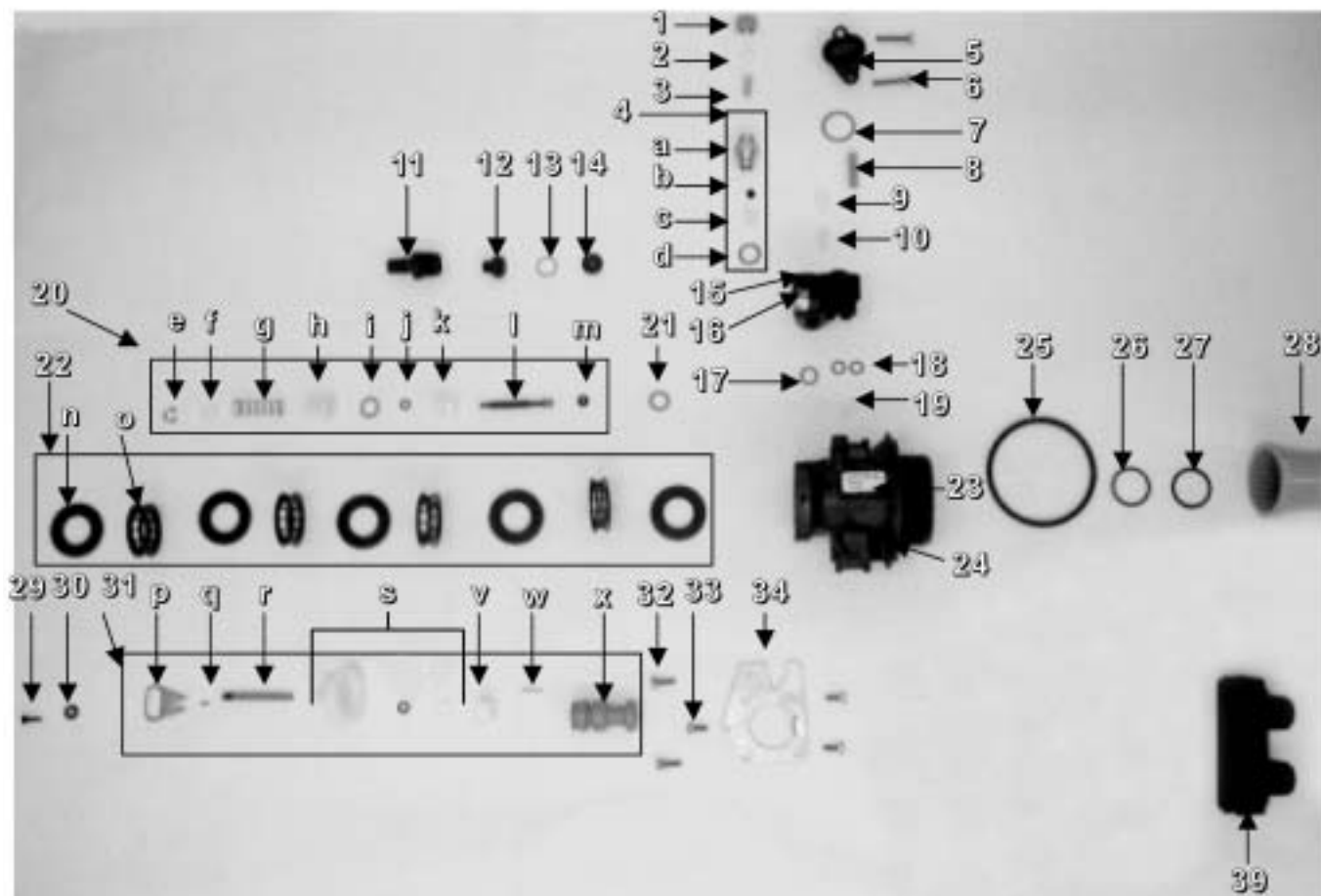
**BACK**



## 5600 Power Head Back

Item No.	Qty Req'd	Part No.	Description	Item No.	Qty Req'd	Part No.	Description
1	1	13162-000	Drive Housing/Receptacle	18	1	13980	5600 Cam Assembly
2	1	18655	Roll pin		1	13168	Brine Valve Cam
3	1	13018	Idler Pinion		1	11081	Hex Nut
4	1	13312	Idler Shaft Pin		1	13307	Salt Label
5	1	13017	Idler Gear		1	13710	Warning Label
6	1	13164	Drive Gear		1	13169	Cam Segment
7	1	13175	Motor Mounting Plate		1	11980	Screw
8	2	13296	Mounting Screws	19	1	12037	Plain Washer
9	1	18743-1	Drive Motor, 120V	20	1	13296	Screw
10	3	11384	Screws	NS	1	13229	Back Cover
11	1	29702	Lock Washer	NS	2	13296	Screws
12	1	11842	Power Cord				
13	1	13547	Strain Relief				
14	2	11673	Connectors				
15	2	14457	Springs				
16	2	13300	1/4" Ball				
17	1	13170	Main Gear & Shaft				

# Econoflo CC Cabinet/Twin Tank - 5600 Control Valve



# Econoflo Twin Tank - 5600 Control Valve

Item No.	Qty Req'd	Part No.	Description	Item No.	Qty Req'd	Part No.	Description
1	1	10329	3/8" Brass Nut	e	1	11981-01	Retaining Ring
2	1	10330	Delrin Sleeve	f	1	16098	Brine Washer, Nylon
3	1	10332	Brass Insert	g	1	11973	BV Spring
<b>4</b>	<b>1</b>	<b>19402</b>	<b>Control .25 Refill</b>	h	1	13165	Brine Valve Cap
	<b>1</b>	<b>19403</b>	<b>Control .50 Refill</b>	i	1	13302	O-Ring
a	1	13244	BLFC Adapter	j	1	12550	Quad Ring
b	1	12094	0.25 GPM Flow Washer	k	1	13167	Brine Valve Spacer
	1	12095	0.50 GPM Flow Washer	l	1	13172	Brine Valve Stem
c	1	13245	BLFC Button Retainer	m	1	12626	Brine Valve Seat
d	1	12977	O-Ring	21	1	13302	O-Ring
5	1	13166	Injector Cover	<b>22</b>	<b>1</b>	<b>13976</b>	<b>Seal &amp; Spacer Assembly</b>
6	2	13315	Screws	n	5	13242	Main Seals
7	1	13303	O-Ring	o	4	14241	Spacers
8	1	10227	Injector Screen	23	1	13333	Injector Label
9	1	10913-1	White Injector Nozzle	24	1	19700-10	Valve Body
	1	10913-3	Yellow Injector Nozzle	25	1	12281	O-Ring
10	1	10914-1	White Injector Throat	26	1	13304	O-Ring
	1	10914-3	Yellow Injector Throat	27	1	13030	Distributor Tube
11	1	13308	Black Hose Barb	28	1	18280	Cone
12	1	13173	DLFC Button Retainer	29	1	13296	Screw
13	1	15348	O-Ring	30	1	13363	Plain Washer
14	1	12086	1.50 GPM Flow Washer	<b>31</b>	<b>1</b>	<b>13975</b>	<b>Piston Assembly</b>
	1	12087	2.00 GPM Flow Washer	p	1	13003	Piston Rod Link
	1	12089	3.00 GPM Flow Washer	q	1	13306	Roll Pin
	1	12091	4.00 GPM Flow Washer	r	1	13002	Piston Rod
15	1	13163	Injector Body	s	1	13446	End Plug Assembly
16	1	12128	BLFC Label, 0.25 GPM	v	1	12953	Piston Rod Retainer
	1	10759	0.5 GPM Label	w	1	10696	Piston Pin
17	1	12638	O-Ring	x	1	13247	Piston
18	2	13301	O-Ring	32	2	12473	Screws
19	1	13497	Air Dispenser	33	3	12112	Screws
<b>20</b>	<b>1</b>	<b>13977</b>	<b>Brine Valve Assembly</b>	34	1	13546	End Plug Retainer
				39	1	18706-02	3/4" Plastic Yoke