

## DUROclean ISF MANGANESE GREENSAND FILTERS



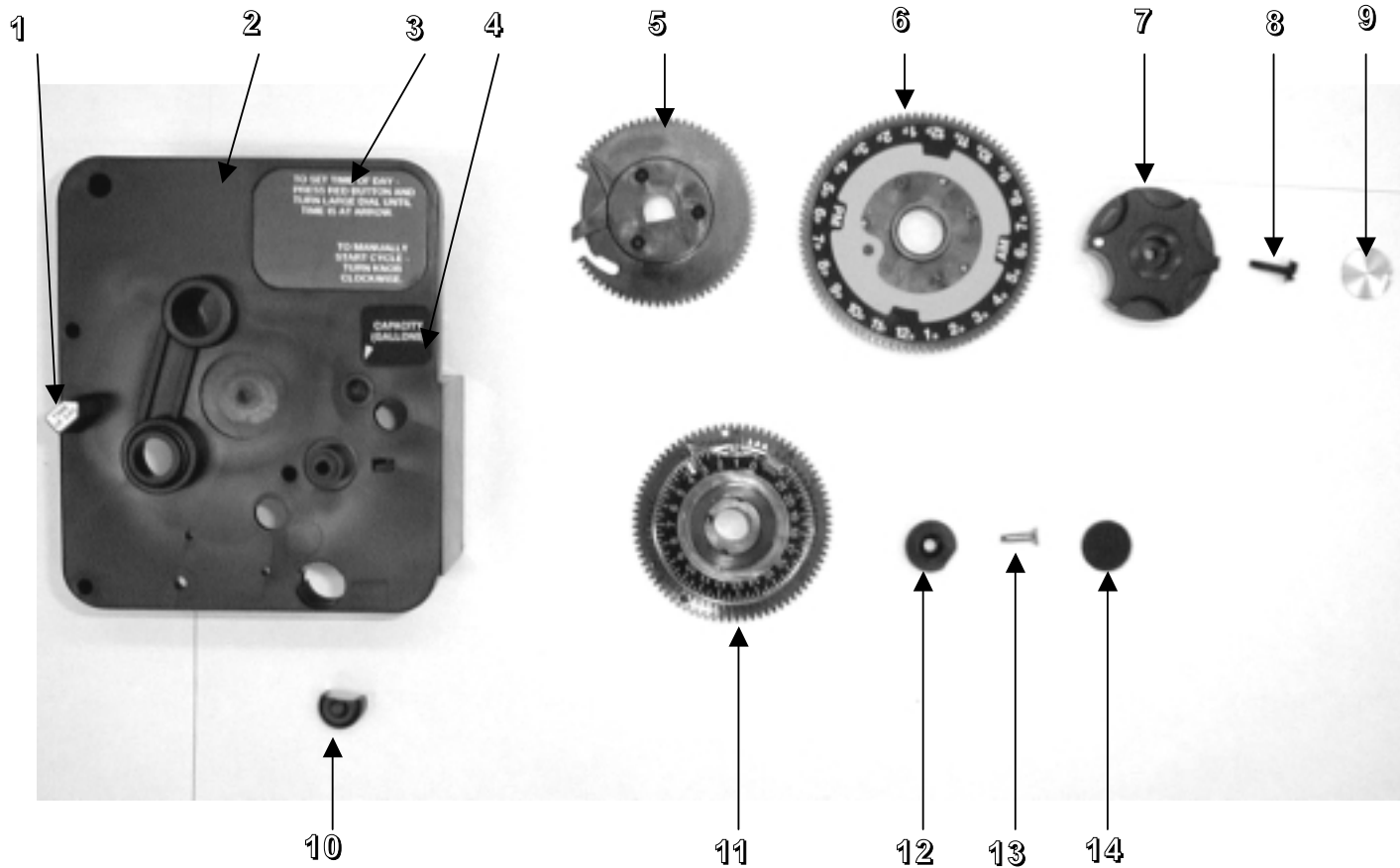
Item No.	Model Description	Clack Feeder(2)	Valve (4)	Tank (5)	Jacket (7)	Bypass (NS)	Distributor (8)	Media Bed
3260	DISF75	33030	2510 - 29	18474	100502	60049	19478	95411 - 75
3261	DISF10	33017	2510 - 30	110474	100507	60049	19478	95412 - 10
3262	DISF15	33017	2510 - 31	112524	NA	60049	19477	95413 - 15
3263	DISF20	33017	2510 - 32	114501	NA	60049 - 1	19477	95414 - 20

### Common Components

Pro-Pot Perm (1)	95020
Cover (3)	19291 - 020
Tubing (6)	115208

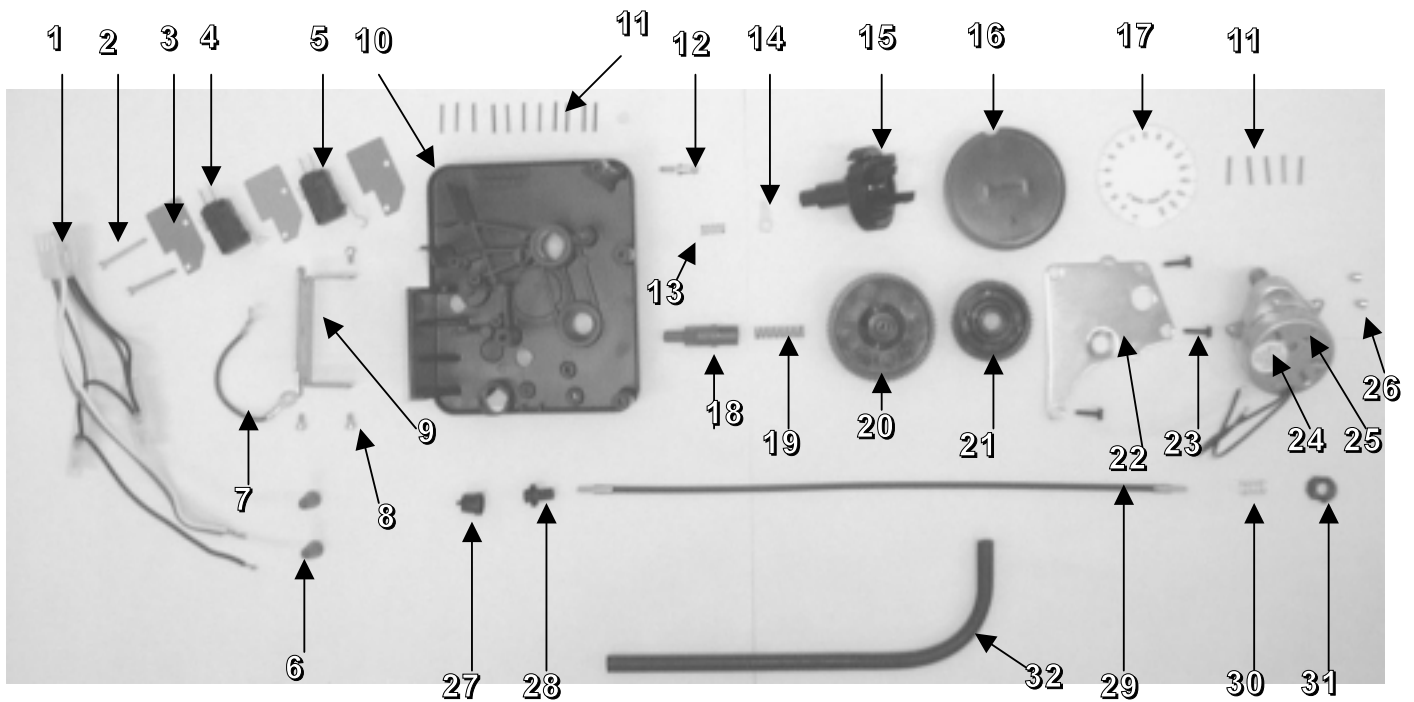
**Notes:** Unit 3263 also includes a CPVC tank adapter - Part No. 81041  
 Unit 3263 also gets a 3/8" plastic union tee - Part No. 48033

## 3210 Timer Front Assembly



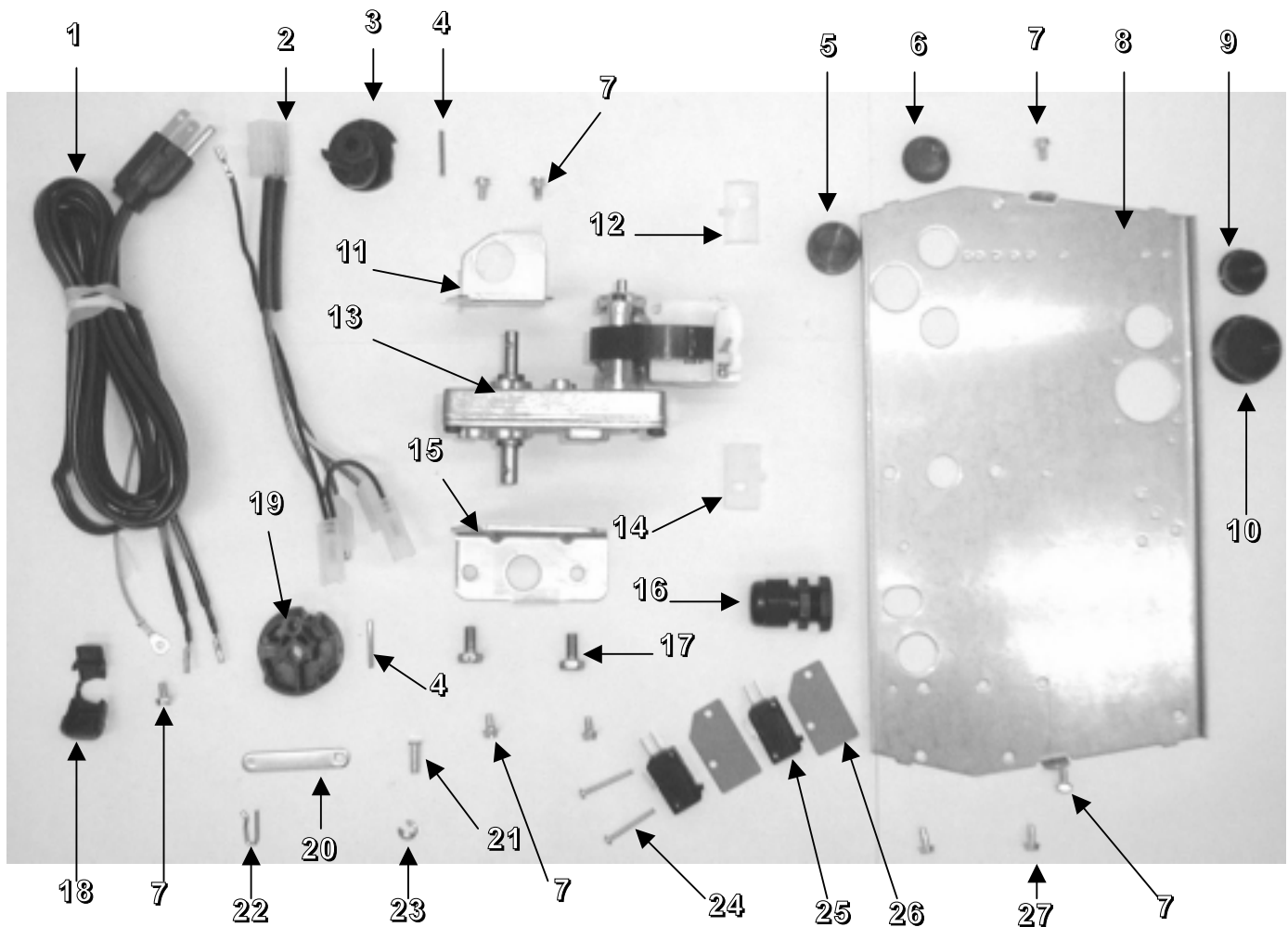
Item #	Qty. Req'd	Part #	Description
1	1	14007	Time Of Day Label
2	1	13870	Timer Housing
3	1	14045	Instruction Timer Label
4	1	14198	Indicator Label
5	1	13802	Cycle Actuator Gear
<b>6</b>	<b>1</b>	<b>13973</b>	<b>24 Hour Gear Assembly</b>
	1	13009	24 Hour Gear
	1	13956	24 Hour Label
7	1	13886	Timer Knob
8	1	13296	Mounting Screw
9	1	11999	Button Timer Label
10	1	14252	Outboard Bearing Cap
<b>11</b>	<b>1</b>	<b>14039</b>	<b>Program Wheel Assembly</b>
	1	13803	Program Drive Wheel Gear
	1	13885	Program Wheel Cover
	1	15956	Program Wheel Adjustment Disc
	1	15967	Gallons Label
	2	13898	Screws
12	1	13806	Program Wheel Retainer
13	1	13748	Screw
14	1	13953	Program Wheel Cover Label

## 3210 Timer Back Assembly



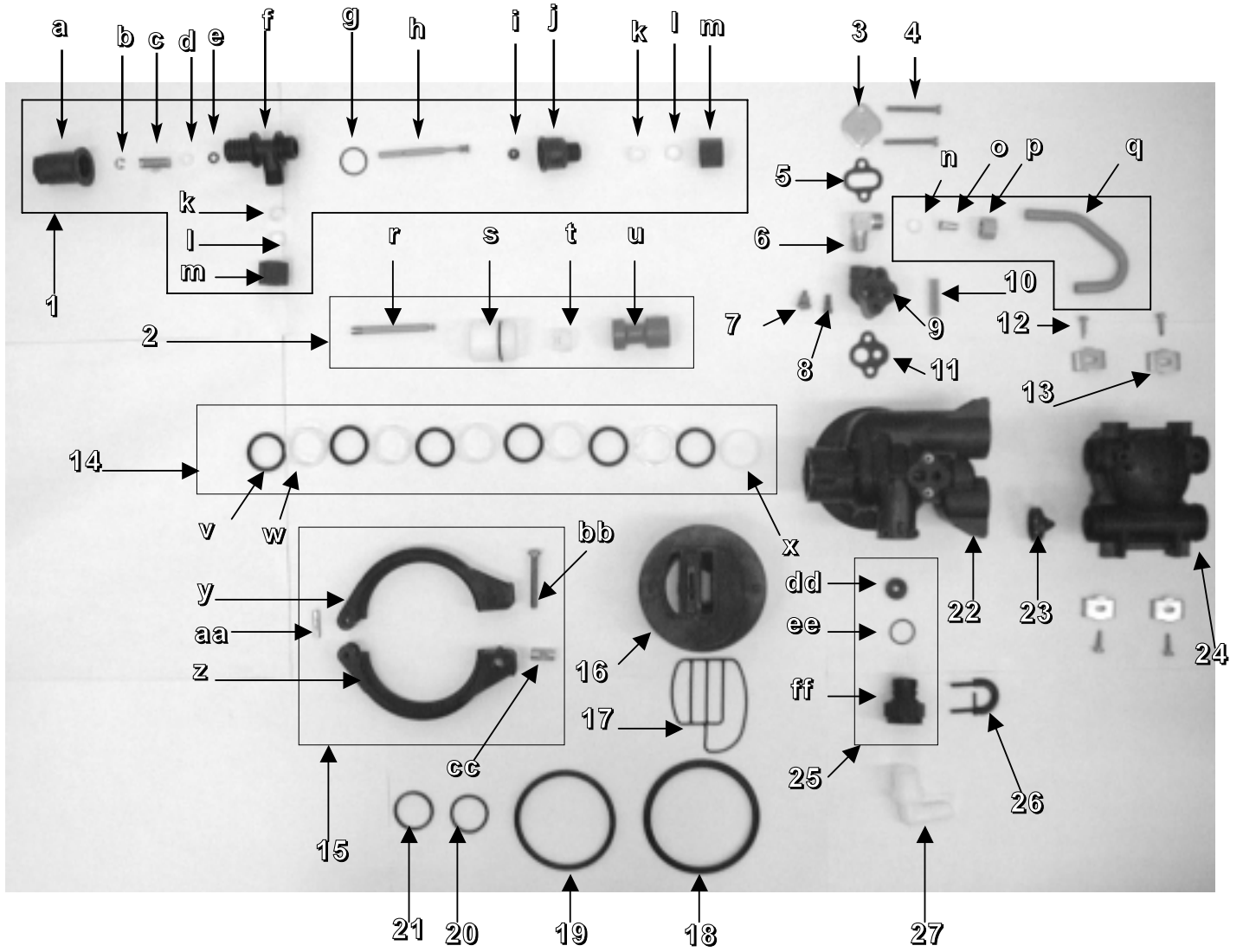
Item #	Qty. Req'd	Part #	Description
1	1	13902	Wire Harness
2	2	11413	Screws
3	3	14087	Insulator
4	1	15320	Micro Switch (White Lever)
5	1	10896	Micro Switch (1/2 Moon Lever)
6	2	18612	Blue Wire Nut
7	1	15354 - 01	Green Ground Wire
8	3	11384	Screws
9	1	13881	Hinge Bracket
10	1	13870	Timer Housing
11	16	15493	Spring Pin
12	1	14265	Spring Clip
13	1	14457	Spring
14	1	15066	1/4" Delrin Ball
15	1	13911	Main Drive Gear
16	1	13880	Program Wheel
17	1	13901	Program Wheel Label
18	1	13018	Idler Pinion
19	1	13312	Idler Shaft Spring
20	1	13017	Idler Gear
21	1	13164	Drive Gear
22	1	13887	Motor Mounting Plate
23	3	13296	Screws
24	1	18743	Drive Motor, 120 V
25	1	14102	Motor Label
26	2	13278	Screws
27	1	13830	Program Wheel Drive Pinion
28	1	13831	Drive Pinion Clutch
29	1	14730	Meter Cable
30	1	14276	Meter Clutch Spring
31	1	14253	Clutch Spring Retainer
32	1	15307	Meter Cable Guide

## 2510 Power Head Assembly



Item #	Qty. Req'd	Part #	Description	Item #	Qty. Req'd	Part #	Description
1	1	11838	Power Cord	15	1	10774	Motor Bracket, Dr. Side
2	1	11667	Wire Harness	16	1	17967	Liquid Tight Fitting
3	1	12777	Brine Valve Cam	17	2	10231	Screws
4	2	10338	Roll Pin	18	1	13547	Strain Relief
5	1	16493	Plug	19	1	12576	Drive Cam
6	1	13741	Plug	20	1	10621	Link
7	7	10872	Motor Mounting Screws	21	1	13366	Drive Bearing
8	1	15156	Back Plate	22	1	10909	Connecting Rod Pin
9	1	15806	Plug	23	1	10250	Retaining Ring
10	1	17421	Plug	24	2	14923	Screws
11	1	11826	Motor Bracket	25	2	10218	Micro Switch (No Lever)
12	1	28414 - 2	K	26	2	10302	Insulator
13	1	10769	Drive Motor, 110V	27	2	10300	Screws
14	1	28414 - 1	M				

## 2510 Control Valve



## 2510 Control Valve

Item #	Qty. Req'd	Part #	Description	Item #	Qty. Req'd	Part #	Description
1	1	60011-25	.25 GPM Brine Valve	12	4	13314	Screws
	1	60011-50	.50 GPM Brine Valve	13	4	13255	Mounting Clip
	1	60011-100	1.0 GPM Brine Valve	14	1	13812	Seal & Spacer Kit
a	1	17906	Stem Guide	v	6	10545	Piston Seal
b	1	10250	Retaining Ring	w	5	11451	Spacer
c	1	10249	BV Spring	x	1	10757	End Spacer
d	1	17908	Stem Sleeve	15	1	40254	2510 Clamp Ring Assy.
e	1	12550	Quad Ring	y	1	19900	Male Clamp
f	1	17905	Brine Valve Body	z	1	19899	Female Clamp
g	1	16924	O - Ring	aa	1	040000	Hinge Pin
h	1	12552	Brine Valve Stem	bb	1	40057	Clamp Screw
i	1	12626	Brine Valve Seat	cc	1	19998	Clamp Pivot
j	1	17907	Flow Control Fitting	16	1	19322	Adapter Base
k	2	19624	GFN Nut Sleeve	17	1	19936	Base Adapter Seal
l	2	19623	GFN Nut Gripper	18	1	19197	Slip Ring
m	2	19321	Nut	19	1	18303	O - Ring
n	1	10330	3/8" Delrin Sleeve	20	1	13304	O - Ring
o	1	10332	3/8" Insert	21	1	13030	Dist. Tube Retainer
p	1	10329	3/8" Fitting Nut	22	1	19328	2510 Valve Body
q	1	40027	Brine Valve Tube	23	1	14613	Flow Straightener
2	1	13811	Piston Assembly	24	1	60088 - 180	180 Degree Meter
r	1	14452	Piston Rod	25	1	13615	Cont. Backwash 3.5 Assy
s	1	10598	End Plug Assembly		1	13616A	Cont. Backwash 5.0 Assy
t	1	14309	Piston Rod Retainer		1	13617	Cont. Backwash 7.0 Assy
u	1	15168	Piston		1	60700 - 101	Control DLF 10 GPM
3	1	11893	Flat Injector Cap				(Shown below)
4	2	10692	Screws	dd	1	12090	3.50 GPM Washer
5	1	10229	Injector Cover Gasket		1	12092	5.00 GPM Washer
6	1	10328	90 Degree Tube Fitting		1	12408	7.00 GPM Washer
7	1	12973 - 2	PVC Nozzle		1	16529	10.00 GPM Washer
8	1	12974 - 2	PVC Throat	ee	1	11183	O - Ring
9	1	17776	Injector Body	ff	1	11385 - 01	Flow Control Housing
10	1	10227	Injector Screen	26	1	18312	Retainer Clip
11	1	11475	Injector Body Gasket	27	1	12338	90 Degree Hose Barb

Part # 60700 – 101 includes part #'s: 019480, 11183, 11912, and 16529.

