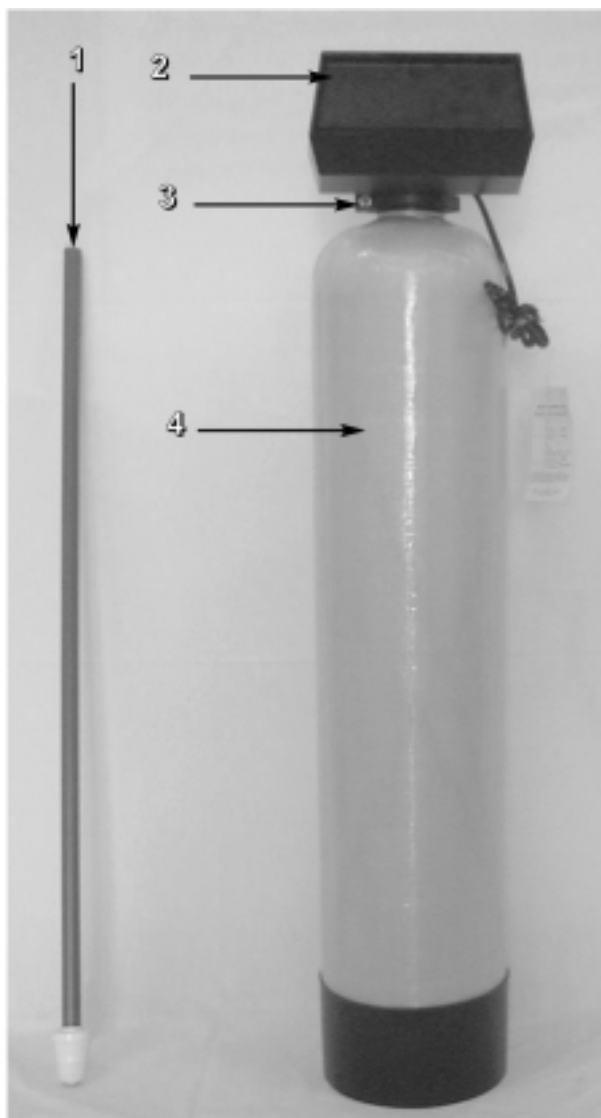


Chloramines Removal Filter

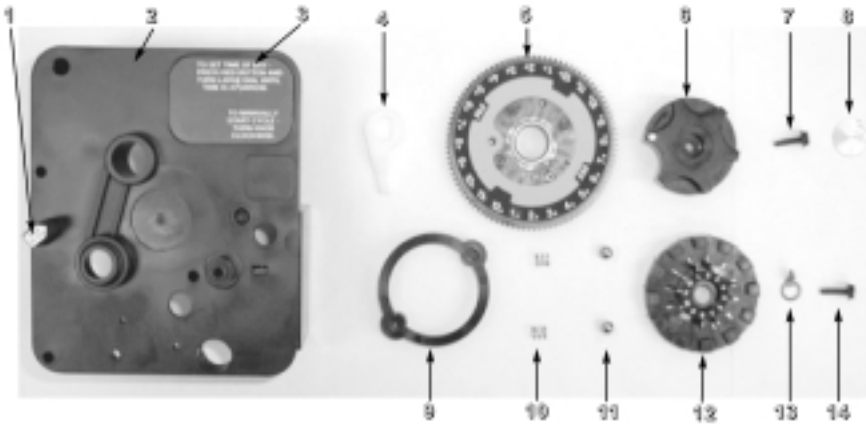


<u>Part No.</u>	<u>Model Description</u>	<u>Distributor (1)</u>	<u>Cover (2)</u>	<u>Valve (3)</u>	<u>Tank (4)</u>	<u>Media</u>
3995	CLF20	19477	19291-020	2510-87	114506	95629
3996	CLF35	60098	19291-020	2500-101	116656	95630

Units include a CPVC tank adapter - Part No. 81041

2510 Calendar Clock Valve - 3200 Timer Assembly

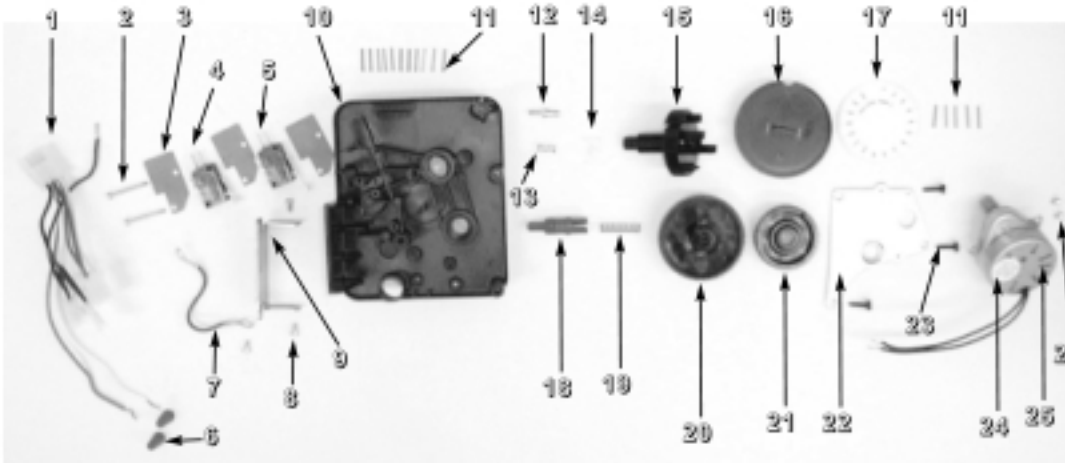
FRONT



3200 CC Timer Assembly - FRONT

Item No.	Qty Req'd	Part No.	Description
1	1	14007	Time Of Day Label
2	1	13870	Timer Housing
3	1	14045	Instruction Timer Label
4	1	13011	Cycle Arm
5	1	13973	24 Hour Gear Assembly
	1	13009	24 Hour Gear
	1	13956	24 Hour Label
6	1	13886	Timer Knob
7	1	13296	Mounting Screw
8	1	11999	Button Timer Label
9	1	13864	Skipper Wheel Ring
10	2	13311	Skipper Wheel Spring
11	2	13300	1/4" Ball
12	1	14381	Skipper Wheel Assembly
13	1	13014	Red Regeneration Pointer
14	1	13296	Mounting Screw

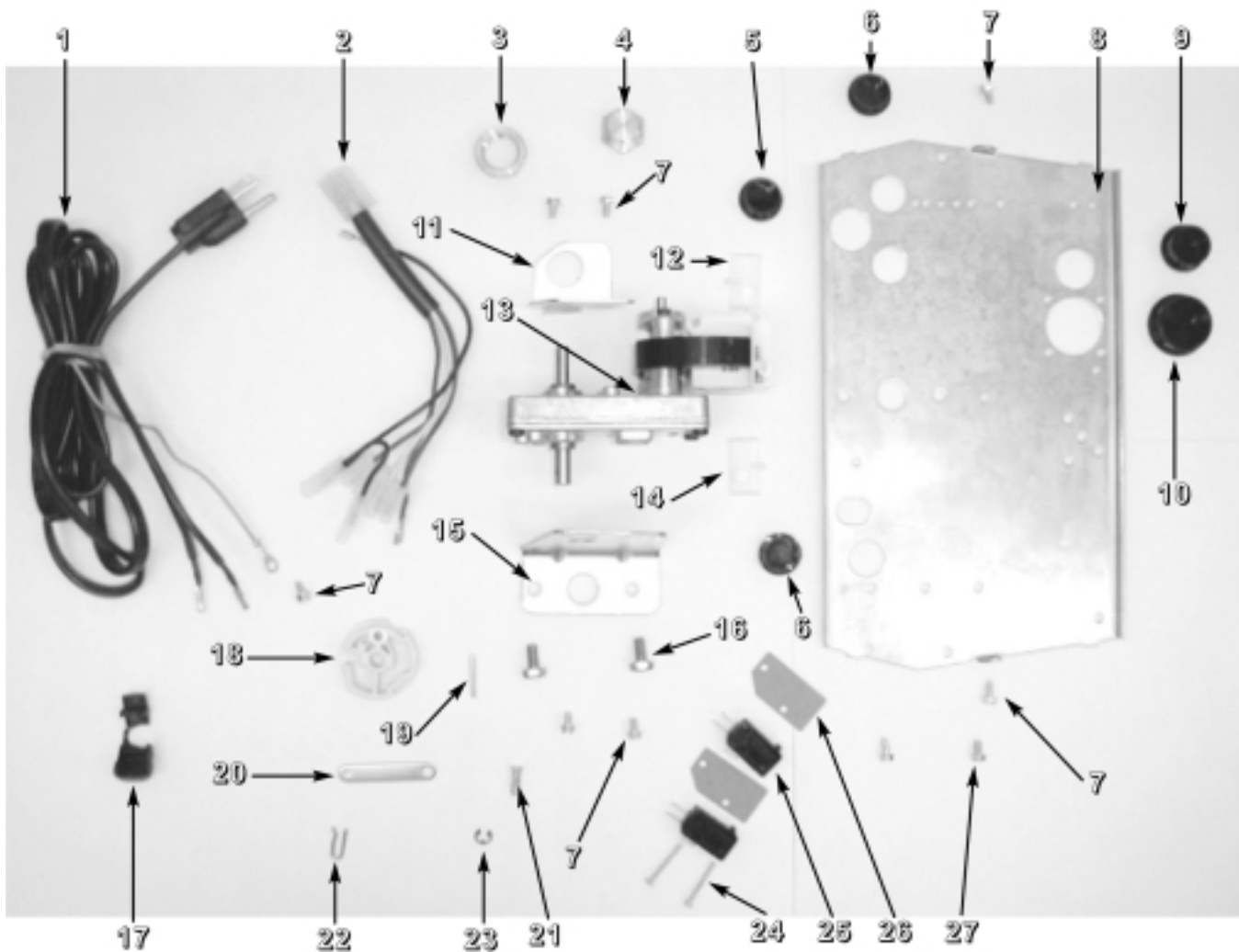
BACK



3200 CC Timer Assembly - BACK

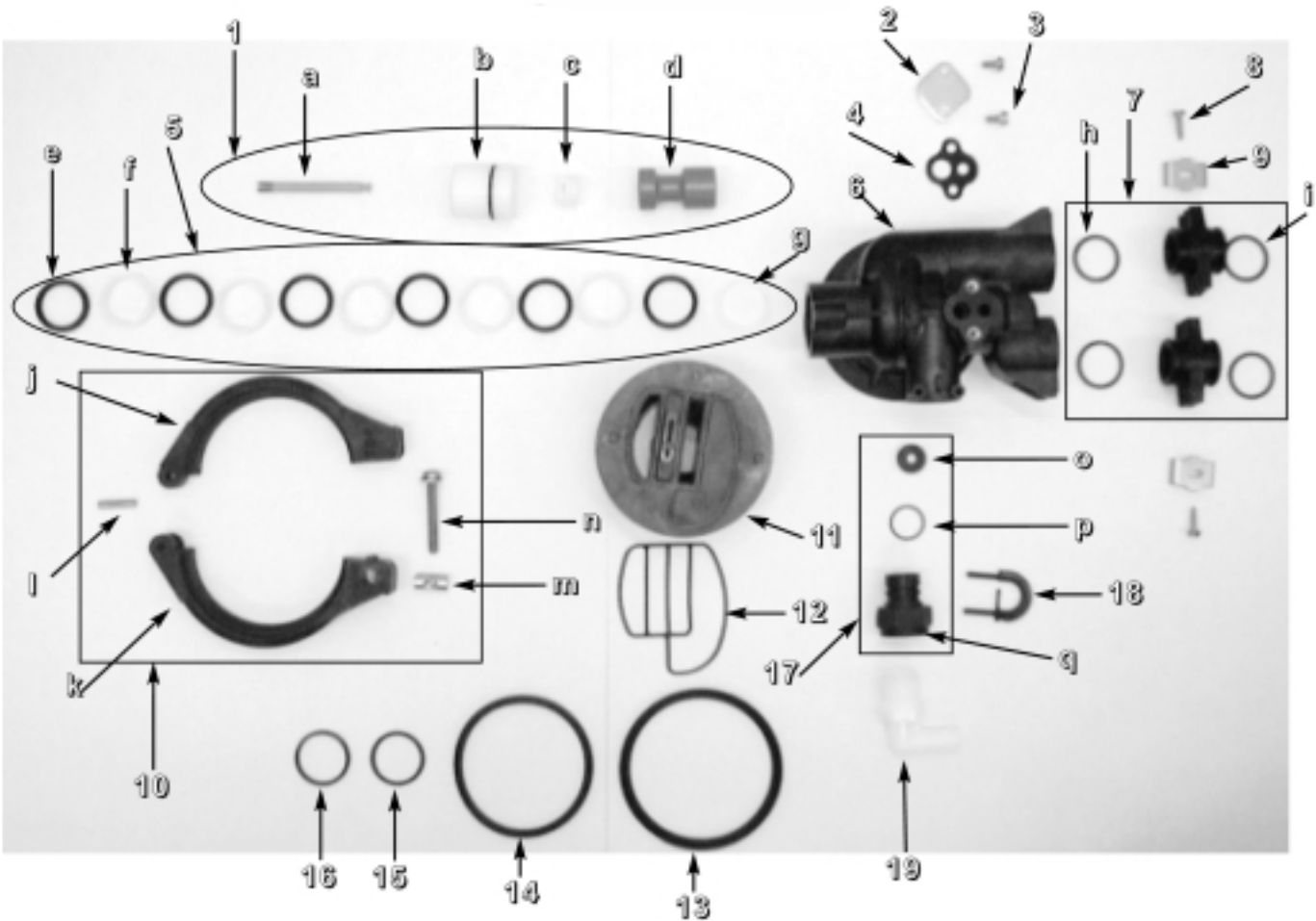
Item No.	Qty Req'd	Part No.	Description	Item No.	Qty Req'd	Part No.	Description
1	1	13902	Wire Harness	16	1	13880	Program Wheel
2	2	11413	Screw	17	1	13901	Program Wheel Label
3	3	14087	Insulator	18	1	13018	Idler Pinion
4	1	15320	Micro Switch (White Lever)	19	1	13312	Idler Shaft Spring
5	1	10896	Micro Switch (1/2 Moon Lever)	20	1	13017	Idler Gear
6	2	18612	Blue Wire Nut	21	1	13164	Drive Gear
7	1	15354-01	Green Ground Wire	22	1	13887	Motor Mounting Plate
8	3	11384	Screw	23	3	13296	Screws
9	1	13881	Hinge Bracket	24	1	14102	Motor Label
10	1	13870	Timer Housing	25	1	18743	Drive Motor, 120 V
11	16	15493	Spring Pin	26	2	13278	Screws
12	1	14265	Spring Clip				
13	1	14457	Spring				
14	1	15066	1/4" Delrin Ball				
15	1	13911	Main Drive Gear				

2510 Calendar Clock Power Head Assembly



Item No.	Qty Req'd	Part No.	Description	Item No.	Qty Req'd	Part No.	Description
1	1	11838	Power Cord	15	1	10774	Drive Side Bracket
2	1	11667	Wire Harness	16	2	10231	Screws
3	1	10269	Jam Nut	17	1	13547	Strain Relief
4	1	10712	Brine Valve Fitting	18	1	12102	Cam
5	1	16493	Plug	19	1	10338	Roll Pin
6	2	13741	Plug	20	1	10621	Link
7	7	10872	Screws	21	1	13366	Drive Bearing
8	1	40264	Back Plate	22	1	10909	Connecting Rod Pin
9	1	15806	Plug	23	1	10250	Retaining Ring
10	1	17421	Plug	24	2	14923	Screws
11	1	11826	Motor Bracket	25	2	10218	Micro Switch
12	1	28414 - 2	K	26	2	10302	Insulator
13	1	10769	Drive Motor	27	2	10300	Screws
14	1	28414 - 1	M				

2510 Calendar Clock Control Valve Assembly



Item No.	Qty Req'd	Part No.	Description	Item No.	Qty Req'd	Part No.	Description
1	1	13811	Piston Assembly	1	1	040000	Hinge Pin
a	1	14452	Piston Rod	m	1	19998	Pivot Clamp
b	1	10598	End Plug Assembly	n	1	40057	Clamp Screw
c	1	14309	Piston Rod Retainer	11	1	19322	Adapter Base
d	1	15168	Piston	12	1	19936	Base Adapter Seal
2	1	11893	Flat Injector Cap	13	1	19197	Slip Ring
3	2	15137	Screws	14	1	18303	O - Ring
4	1	11475	Body Gasket	15	1	13304	O - Ring
5	1	13812	Seal & Spacer Kit	16	1	13030	Dist. Tube Retainer
e	6	10545	Piston Seal	17	1	60700-101	DLFC, 10GPM
f	5	11451	Spacer		1	60700-15	DLFC, 15GPM
g	1	10757	End Spacer	o	1	16736	10 GPM Washer
6	1	19328	2510 Valve Body		1	16529	15 GPM Washer
7	2	13248	Adapter Coupling Set	p	1	11183	O - Ring
h	4	13305	O - Ring	q	1	019480	Housing
i	2	19228	Adapter Coupling	18	1	18312	Retainer Clip
8	2	13314	Screws	19	1	12338	90 Degree Hose Barb
9	2	13255	Mounting Clip				
10	1	P60503	2510 Clamp Ring Assy.				
j	1	19900	Male Clamp				
k	1	19899	Female Clamp				